

PC41/42E-D

The PC41/42E-D desktop printer is now available in a range of models designed to fit diverse printing needs, ensuring flexibility and performance for retail and industrial applications. This printer is engineered for seamless operation, delivering high-quality labels and tags with impressive speed and precision.

AT A GLANCE

Designed for diverse operational environments, the PC41/42E-D desktop printer is a compact and efficient printing solution that excels in reliability and ease of use. With advanced connectivity options, intuitive management features, and the capability to produce high-quality labels, the PC41/42E-D enhances operational efficiency and adaptability across various applications.



FEATURES AND BENEFITS



High Resolution
at 203 and 300 dpi to support direct thermal transfer



Superior Security
through patches, mandatory cyber security validation processes, and more.

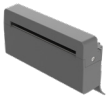


Compact Design
combines functionality with style, suitable for back-end and front-end environments,



Flexible Connectivity
with USB, Ethernet, Wi-Fi, and Bluetooth for remote printing and device management.

ACCESSORIES



Cutter



Peeler



Wi-Fi/BT Module



USB to Serial

Other Software Add-Ons

Operational Intelligence, SOTI Connect, PrintSet6, PrintSet MC

For more information

automation.honeywell.com

Honeywell Industrial Automation

855 S Mint Street
Charlotte, NC 28202
800-582-4263
www.honeywell.com

PC41/42E-D Flyer | Rev A | 07/25
© 2025 Honeywell International Inc

Honeywell