

CT70

ULTRA RUGGED MOBILE COMPUTER

Configuration Guide



SCAN HANDLE



RFID



VEHICLE DOCK



CT70
STANDARD
BATTERY



CT70
EXTENDED
BATTERY




CT70
WIRELESS
BATTERY

THE
FUTURE
IS
WHAT
WE
MAKE IT

Honeywell

TABLE OF CONTENTS

1	TABLE OF CONTENTS	21	CT70 DESKTOP COMMUNICATIONS	37	CT70 CHARGING AND COMMUNICATION
2	CT70 FEATURE OVERVIEW		OPTION 1 – USB TYPE C ON-THE-GO (OTG) DESKTOP		RACK / WALL MOUNT BRACKET
	S0703 STANDARD RANGE		OPTION 2 – PORTABLE - USB-C (QUICK CHARGE)	38	CT70 BATTERY
	STANDARD BATTERY		OPTION 3 - FIXED WITH UNIVERSAL CUP		SPARE BATTERY OPTIONS
	WIRELESS BATTERY		OPTION 4 - DISPLAY BASE WITH UNIVERSAL CUP	39	CT70 RFID
	EXTENDED BATTERY	24	CT70 VEHICLE INSTALL		IH45 RFID READER WITH CT70 NON-BOOTED
	EXTENDED BATTERY - UHF RFID		OPTION 1 – PORTABLE/ SUB CONTRACTOR INSTALL		OPTION 1 - IH45 NON-BOOTED QUAD CHARGE
	S0803FR FLEXRANGE™ NEAR/ FAR RANGE		OPTION 2 – PORTABLE/ SUB CONTRACTOR INSTALL		OPTION 2 - IH45 BOOTED QUAD CHARGER
	STANDARD BATTERY		OPTION 3 - FIXED VEHICLE INSTALL WITH DIRECT CONNECTION		OPTION 3 - IH45 QUAD BATTERY CHARGER
	WIRELESS BATTERY		TO VEHICLE BATTERY	42	CT70 HEADSET
	EXTENDED BATTERY		OPTION 4 - FIXED VEHICLE INSTALL WITH DIRECT CONNECTION		USB-C CT70 PUSH TO TALK (PTT) HEADSET
	EXTENDED BATTERY - UHF RFID		TO VEHICLE BATTERY/ FUSE BLOCK	43	CT70 WEARABLE
10	CT70 CONFIGURATION MAP		OPTION 5 - FIXED VEHICLE INSTALL WITH THOR DC/DC		WEARABLE KIT
	ANDROID		CONVERTER		WEARABLE KIT - REPLACEMENT PARTS
11	HONEYWELL EDGE SERVICES	28	CT70 VEHICLE INSTALL	44	MISCELLANEOUS
	GOLD REPAIR SERVICES - 3 YEAR		CT70 WIRED VEHICLE DOCK (CT70-VD-WD) DETAIL VIEW		OPTIONAL PARTS
	PLATINUM REPAIR SERVICES - 3 YEAR	29	CT70 VEHICLE INSTALL WIRELESS CHARGING		MICRO-SD CARDS
	GOLD REPAIR SERVICES - 5 YEAR		OPTION 1 - FIXED VEHICLE INSTALL WITH DIRECT CONNECTION		AC CORDS
	PLATINUM REPAIR SERVICES - 5 YEAR		TO VEHICLE BATTERY - EXTERNAL SPEAKER		
	CT70 - REPAIR SERVICES COVERAGE		OPTION 2 - FIXED VEHICLE INSTALL WITH DIRECT CONNECTION		
			TO VEHICLE BATTERY/ FUSE BLOCK - EXTERNAL SPEAKER		
14	CT70 SOFTWARE		OPTION 3 - FIXED VEHICLE INSTALL WITH THOR DC/DC		
	DEVICE CLIENT PACK		CONVERTER - EXTERNAL SPEAKER		
	IVANTI VELOCITY	32	CT70 VEHICLE INSTALL WIRELESS CHARGING		
16	CT70 ACCESSORIES		CT70 WIRELESS VEHICLE DOCK (CT70-VD-WL-SPK) DETAIL VIEW		
	CHARGERS	33	CT70 CHARGING AND COMMUNICATION		
17	CT70 SCANNING		OPTION 1 - QUAD CHARGER WITH UNIVERSAL CUP		
	SCAN HANDLE SIDE BY SIDE COMPARISON		OPTION 2 - QUAD CHARGER WITH UNIVERSAL CUP		
	OPTION 1 - SCAN HANDLE		OPTION 3 - 5-BAY CHARGER WITH UNIVERSAL CUPS		
	OPTION 2 - SCAN HANDLE WITH PROTECTIVE BOOT		OPTION 4 - 5-BAY CHARGER WITH BATTERY CUP		
20	CT70 PROTECTIVE BOOT		OPTION 5 - 4-BAY BATTERY CHARGER		
	DOCKABLE PROTECTIVE BOOT		OPTION 6 - 16-BAY BATTERY CHARGER		
			OPTION 7 - 5-BAY CHARGE BASE ONLY - ORDER CUPS SEPARATELY		

CT70 FEATURE OVERVIEW

S0703 Standard Range – Standard Battery

Included in the box:

- CT70 Mobile Computer
- Battery (CT70-BTSC-001)
- Hand strap

(Stylus is NOT included, but available to order separately as an accessory)



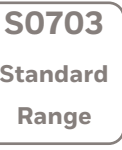
Hot Battery Swap



5G / GPS



Wi-Fi 7 / BT



Scanner



S0703 Standard Range



CT70 Android - 5G WWAN – S0703 – 8GB RAM/ 128GB Flash

CT70-X1N-057CS104G

CT70, 5G WWAN, 6.0 inch 2280x1080 Full HD Display, Wi-Fi 7 802.11 a/b/g/n/ac/d/h/i/r/k/v/w/mc/ax/be, 2x2 MU-MIMO, BT6.0 & 2nd BLE, 1 x Nano SIM & 1 x eSIM, Near Field Communications (NFC), 4,775mAh Standard Battery (Hot Swap), IP65/68, USB 3.1 Type C OTG, Quick Charge 4.0, Push To Talk, Hand Strap, 8GB RAM/128GB Flash, S0703 Standard Range, 13MP Rear Camera / 8MP Front Camera, Android (GMS), Standard, Device Client Pack (DCP) Pre-Loaded (1 Year DCP Term License - Honeywell Launcher, Enterprise Browser, BasicTE), Global

CT70 Android - Wi-Fi Only – S0703 – 8GB RAM/ 128GB Flash

CT70-L0N-057CS104G

CT70, WLAN, 6.0 inch 2280x1080 Full HD Display, Wi-Fi 7 802.11 a/b/g/n/ac/d/h/i/r/k/v/w/mc/ax/be, 2x2 MU-MIMO, BT6.0 & 2nd BLE, Near Field Communications (NFC), 4,775mAh Standard Battery (Hot Swap), IP65/68, USB 3.1 Type C OTG, Quick Charge 4.0, Push To Talk, Hand Strap, 8GB RAM/128GB Flash, S0703 Standard Range, 13MP Rear Camera / 8MP Front Camera, Android (GMS), Standard, Device Client Pack (DCP) Pre-Loaded (1 Year DCP Term License - Honeywell Launcher, Enterprise Browser, BasicTE), Global

Honeywell Repair Services

SVCCT70-SG3N

CT70, Edge Service, Gold Maintenance Contract, 3 Year, New Contract

ADD SVCREPLACE-MOB3

AddOn, Edge Service, Device Replacement, Mobility, 3 Year



CT70 FEATURE OVERVIEW

S0703 Standard Range – Wireless Battery

Included in the box:

- CT70 Mobile Computer
- Battery (CT70-BTWC-001)
- Hand strap

(Stylus is NOT included, but available to order separately as an accessory)



Wireless Battery



Hot Battery Swap



5G / GPS



Wi-Fi 7 / BT



Scanner



S0703 Standard Range



CT70 Android - 5G WWAN – S0703 – 8GB RAM/ 128GB Flash

CT70-X1N-057CW104G

CT70, 5G WWAN, 6.0 inch 2280x1080 Full HD Display, Wi-Fi 7 802.11 a/b/g/n/ac/d/h/i/r/k/v/w/mc/ax/be, 2x2 MU-MIMO, BT6.0 & 2nd BLE, 1 x Nano SIM & 1 x eSIM, Near Field Communications (NFC), 4,775mAh Wireless Battery (Hot Swap), IP65/68, USB 3.1 Type C OTG, Quick Charge 4.0, Push To Talk, Hand Strap, 8GB RAM/128GB Flash, S0703 Standard Range, 13MP Rear Camera / 8MP Front Camera, Android (GMS), Standard, Device Client Pack (DCP) Pre-Loaded (1 Year DCP Term License - Honeywell Launcher, Enterprise Browser, BasicTE), Global

CT70 Android - Wi-Fi Only – S0703 – 8GB RAM/ 128GB Flash

CT70-L0N-057CW104G

CT70, WLAN, 6.0 inch 2280x1080 Full HD Display, Wi-Fi 7 802.11 a/b/g/n/ac/d/h/i/r/k/v/w/mc/ax/be, 2x2 MU-MIMO, BT6.0 & 2nd BLE, Near Field Communications (NFC), 4,775mAh Wireless Battery (Hot Swap), IP65/68, USB 3.1 Type C OTG, Quick Charge 4.0, Push To Talk, Hand Strap, 8GB RAM/128GB Flash, S0703 Standard Range, 13MP Rear Camera / 8MP Front Camera, Android (GMS), Standard, Device Client Pack (DCP) Pre-Loaded (1 Year DCP Term License - Honeywell Launcher, Enterprise Browser, BasicTE), Global

Honeywell Repair Services

SVCCT70-SG3N

CT70, Edge Service, Gold Maintenance Contract, 3 Year, New Contract

ADD SVCREPLACE-MOB3

AddOn, Edge Service, Device Replacement, Mobility, 3 Year

CT70 FEATURE OVERVIEW

S0703 Standard Range – Extended Battery

Included in the box:

- CT70 Mobile Computer
- Battery (CT70-BTEC-001)
- Hand strap

(Stylus is NOT included, but available to order separately as an accessory)



Hot Battery Swap

5G / GPS

Wi-Fi 7 / BT

S0703 Standard Range Scanner



S0703 Standard Range



CT70 Android - 5G WWAN – S0703 – 8GB RAM/ 128GB Flash

CT70-X1N-057CE104G

CT70, 5G WWAN, 6.0 inch 2280x1080 Full HD Display, Wi-Fi 7 802.11 a/b/g/n/ac/d/h/i/r/k/v/w/mc/ax/be, 2x2 MU-MIMO, BT6.0 & 2nd BLE, 1 x Nano SIM & 1 x eSIM, Near Field Communications (NFC), 7,692mAh Extended Battery (Hot Swap), IP65/68, USB 3.1 Type C OTG, Quick Charge 4.0, Push To Talk, Hand Strap, 8GB RAM/128GB Flash, S0703 Standard Range, 13MP Rear Camera / 8MP Front Camera, Android (GMS), Standard, Device Client Pack (DCP) Pre-Loaded (1 Year DCP Term License - Honeywell Launcher, Enterprise Browser, BasicTE), Global

CT70 Android - Wi-Fi Only – S0703 – 8GB RAM/ 128GB Flash

CT70-L0N-057CE104G

CT70, WLAN, 6.0 inch 2280x1080 Full HD Display, Wi-Fi 7 802.11 a/b/g/n/ac/d/h/i/r/k/v/w/mc/ax/be, 2x2 MU-MIMO, BT6.0 & 2nd BLE, Near Field Communications (NFC), 7,692mAh Extended Battery (Hot Swap), IP65/68, USB 3.1 Type C OTG, Quick Charge 4.0, Push To Talk, Hand Strap, 8GB RAM/128GB Flash, S0703 Standard Range, 13MP Rear Camera / 8MP Front Camera, Android (GMS), Standard, Device Client Pack (DCP) Pre-Loaded (1 Year DCP Term License - Honeywell Launcher, Enterprise Browser, BasicTE), Global

Honeywell Repair Services

SVCCT70-SG3N	CT70, Edge Service, Gold Maintenance Contract, 3 Year, New Contract
ADD SVCREPLACE-MOB3	AddOn, Edge Service, Device Replacement, Mobility, 3 Year



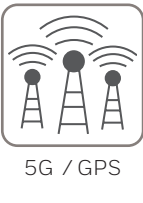
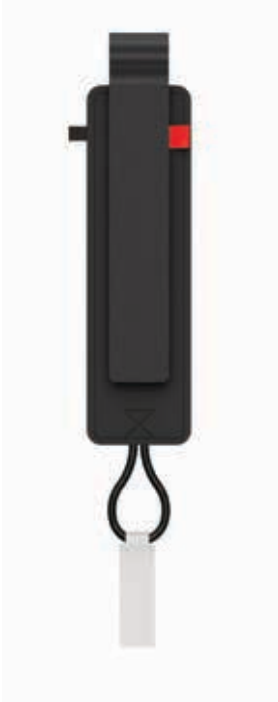
CT70 FEATURE OVERVIEW

S0703 Standard Range – Extended Battery – UHF RFID

Included in the box:

- CT70 Mobile Computer
- Battery (CT70-BTEC-001)
- Hand strap

(Stylus is NOT included, but available to order separately as an accessory)



S0703 Standard Range



CT70 Android - 5G WWAN - RFID - S0703 - 8GB RAM/ 128GB Flash

CT70-X1R-057CE104G	CT70, 5G WWAN, 6.0 inch 2280x1080 Full HD Display, Wi-Fi 7 802.11 a/b/g/n/ac/d/h/i/r/k/v/w/mc/ax/be, 2x2 MU-MIMO, BT6.0 & 2nd BLE, 1 x Nano SIM & 1 x eSIM, Near Field Communications (NFC) + UHF RFID, 7,692mAh Extended Battery (Hot Swap), IP65/68, USB 3.1 Type C OTG, Quick Charge 4.0, Push To Talk, Hand Strap, 8GB RAM/128GB Flash, S0703 Standard Range, 13MP Rear Camera / 8MP Front Camera, Android (GMS), Standard, Device Client Pack (DCP) Pre-Loaded (1 Year DCP Term License - Honeywell Launcher, Enterprise Browser, BasicTE), Global
---------------------------	---

Honeywell Repair Services

SVCCT70-SG3N

CT70, Edge Service, Gold Maintenance Contract, 3 Year, New Contract

ADD SVCREPLACE-MOB3

AddOn, Edge Service, Device Replacement, Mobility, 3 Year



CT70 FEATURE OVERVIEW


S0803FR FlexRange™ Near/ Far Range – Standard Battery

Included in the box:


- CT70 Mobile Computer
- Battery (CT70-BTSC-001)
- Hand strap

(Stylus is NOT included, but available to order separately as an accessory)







Hot Battery Swap



5G / GPS



Wi-Fi 7 / BT



S0803FR FlexRange
Scanner



S0803FR FlexRange™



CT70 Android - 5G WWAN – S0803 FR – 8GB RAM/ 128GB Flash

CT70-X1N-058CS104G

CT70, 5G WWAN, 6.0 inch 2280x1080 Full HD Display, Wi-Fi 7 802.11 a/b/g/n/ac/d/h/i/r/k/v/w/mc/ax/be, 2x2 MU-MIMO, BT6.0 & 2nd BLE, 1 x Nano SIM & 1 x eSIM, Near Field Communications (NFC), 4,775mAh Standard Battery (Hot Swap), IP65/68, USB 3.1 Type C OTG, Quick Charge 4.0, Push To Talk, Hand Strap, 8GB RAM/128GB Flash, S0803FR FlexRange Green Aimer Spot, 13MP Rear Camera / 8MP Front Camera, Android (GMS), Standard, Device Client Pack (DCP) Pre-Loaded (1 Year DCP Term License - Honeywell Launcher, Enterprise Browser, BasicTE), Global

CT70 Android - Wi-Fi Only – S0803 FR – 8GB RAM/ 128GB Flash

CT70-LON-058CS104G

CT70, WLAN, 6.0 inch 2280x1080 Full HD Display, Wi-Fi 7 802.11 a/b/g/n/ac/d/h/i/r/k/v/w/mc/ax/be, 2x2 MU-MIMO, BT6.0 & 2nd BLE, Near Field Communications (NFC), 4,775mAh Standard Battery (Hot Swap), IP65/68, USB 3.1 Type C OTG, Quick Charge 4.0, Push To Talk, Hand Strap, 8GB RAM/128GB Flash, S0803FR FlexRange Green Aimer Spot, 13MP Rear Camera / 8MP Front Camera, Android (GMS), Standard, Device Client Pack (DCP) Pre-Loaded (1 Year DCP Term License - Honeywell Launcher, Enterprise Browser, BasicTE), Global

Honeywell Repair Services

SVCCT70-SG3N	CT70, Edge Service, Gold Maintenance Contract, 3 Year, New Contract
ADD SVCREPLACE-MOB3	AddOn, Edge Service, Device Replacement, Mobility, 3 Year



CT70 FEATURE OVERVIEW

S0803FR FlexRange™ Near/ Far Range – Wireless Battery

Included in the box:

- CT70 Mobile Computer
- Battery (CT70-BTWC-001)
- Hand strap

(Stylus is NOT included, but available to order separately as an accessory)



Wireless Battery



Hot Battery Swap



5G / GPS



Wi-Fi 7 / BT



S0803FR FlexRange

Scanner



S0803FR FlexRange™



CT70 Android - 5G WWAN – S0803 FR – 8GB RAM/ 128GB Flash

CT70-X1N-058CW104G

CT70, 5G WWAN, 6.0 inch 2280x1080 Full HD Display, Wi-Fi 7 802.11 a/b/g/n/ac/d/h/i/r/k/v/w/mc/ax/be, 2x2 MU-MIMO, BT6.0 & 2nd BLE, 1 x Nano SIM & 1 x eSIM, Near Field Communications (NFC), 4,775mAh Wireless Battery (Hot Swap), IP65/68, USB 3.1 Type C OTG, Quick Charge 4.0, Push To Talk, Hand Strap, 8GB RAM/128GB Flash, S0803FR FlexRange Green Aimer Spot, 13MP Rear Camera / 8MP Front Camera, Android (GMS), Standard, Device Client Pack (DCP) Pre-Loaded (1 Year DCP Term License - Honeywell Launcher, Enterprise Browser, BasicTE), Global

CT70 Android - Wi-Fi Only – S0803 FR – 8GB RAM/ 128GB Flash

CT70-LON-058CW104G

CT70, WLAN, 6.0 inch 2280x1080 Full HD Display, Wi-Fi 7 802.11 a/b/g/n/ac/d/h/i/r/k/v/w/mc/ax/be, 2x2 MU-MIMO, BT6.0 & 2nd BLE, Near Field Communications (NFC), 4,775mAh Wireless Battery (Hot Swap), IP65/68, USB 3.1 Type C OTG, Quick Charge 4.0, Push To Talk, Hand Strap, 8GB RAM/128GB Flash, S0803FR FlexRange Green Aimer Spot, 13MP Rear Camera / 8MP Front Camera, Android (GMS), Standard, Device Client Pack (DCP) Pre-Loaded (1 Year DCP Term License - Honeywell Launcher, Enterprise Browser, BasicTE), Global

Honeywell Repair Services

SVCCT70-SG3N

CT70, Edge Service, Gold Maintenance Contract, 3 Year, New Contract

ADD SVCREPLACE-MOB3

AddOn, Edge Service, Device Replacement, Mobility, 3 Year



CT70 FEATURE OVERVIEW


S0803FR FlexRange™ Near/ Far Range - Extended Battery

Included in the box:


- CT70 Mobile Computer
- Battery (CT70-BTEC-001)
- Hand strap

(Stylus is NOT included, but available to order separately as an accessory)







Hot Battery Swap



5G / GPS



Wi-Fi 7 / BT



S0803FR FlexRange Scanner



S0803FR FlexRange™



CT70 Android - 5G WWAN - S0803 FR - 8GB RAM/ 128GB Flash

CT70-X1N-058CE104G

CT70, 5G WWAN, 6.0 inch 2280x1080 Full HD Display, Wi-Fi 7 802.11 a/b/g/n/ac/d/h/i/r/k/v/w/mc/ax/be, 2x2 MU-MIMO, BT6.0 & 2nd BLE, 1 x Nano SIM & 1 x eSIM, Near Field Communications (NFC), 7,692mAh Extended Battery (Hot Swap), IP65/68, USB 3.1 Type C OTG, Quick Charge 4.0, Push To Talk, Hand Strap, 8GB RAM/128GB Flash, S0803FR FlexRange Green Aimer Spot, 13MP Rear Camera / 8MP Front Camera, Android (GMS), Standard, Device Client Pack (DCP) Pre-Loaded (1 Year DCP Term License - Honeywell Launcher, Enterprise Browser, BasicTE), Global

CT70 Android - Wi-Fi Only - S0803 FR - 8GB RAM/ 128GB Flash

CT70-LON-058CE104G

CT70, WLAN, 6.0 inch 2280x1080 Full HD Display, Wi-Fi 7 802.11 a/b/g/n/ac/d/h/i/r/k/v/w/mc/ax/be, 2x2 MU-MIMO, BT6.0 & 2nd BLE, Near Field Communications (NFC), 7,692mAh Extended Battery (Hot Swap), IP65/68, USB 3.1 Type C OTG, Quick Charge 4.0, Push To Talk, Hand Strap, 8GB RAM/128GB Flash, S0803FR FlexRange Green Aimer Spot, 13MP Rear Camera / 8MP Front Camera, Android (GMS), Standard, Device Client Pack (DCP) Pre-Loaded (1 Year DCP Term License - Honeywell Launcher, Enterprise Browser, BasicTE), Global

Honeywell Repair Services

SVCCT70-SG3N	CT70, Edge Service, Gold Maintenance Contract, 3 Year, New Contract
ADD SVCREPLACE-MOB3	AddOn, Edge Service, Device Replacement, Mobility, 3 Year



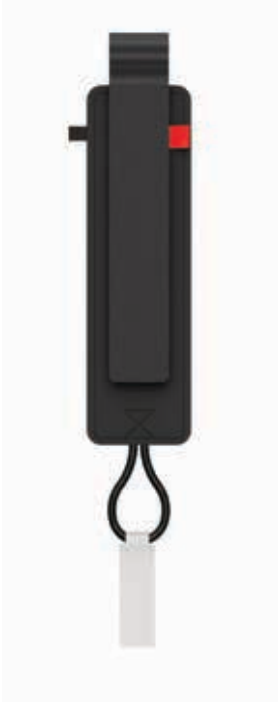
CT70 FEATURE OVERVIEW

S0803FR FlexRange™ Near/ Far Range - Extended Battery - UHF RFID

Included in the box:

- CT70 Mobile Computer
- Battery (CT70-BTEC-001)
- Hand strap

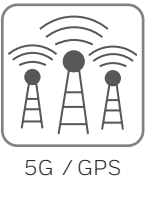
(Stylus is NOT included, but available to order separately as an accessory)



Internal UHF RFID



Hot Battery Swap



5G / GPS



Wi-Fi 7 / BT



S0803FR FlexRange Scanner



S0803FR FlexRange™



CT70 Android - 5G WWAN - RFID - S0803 FR - 8GB RAM/ 128GB Flash

CT70-X1R-058CE104G	CT70, 5G WWAN, 6.0 inch 2280x1080 Full HD Display, Wi-Fi 7 802.11 a/b/g/n/ac/d/h/i/r/k/v/w/mc/ax/be, 2x2 MU-MIMO, BT6.0 & 2nd BLE, 1 x Nano SIM & 1 x eSIM, Near Field Communications (NFC) + UHF RFID, 7,692mAh Extended Battery (Hot Swap), IP65/68, USB 3.1 Type C OTG, Quick Charge 4.0, Push To Talk, Hand Strap, 8GB RAM/128GB Flash, S0803FR FlexRange Green Aimer Spot, 13MP Rear Camera / 8MP Front Camera, Android (GMS), Standard, Device Client Pack (DCP) Pre-Loaded (1 Year DCP Term License - Honeywell Launcher, Enterprise Browser, BasicTE), Global
---------------------------	---





Honeywell Repair Services

SVCCT70-SG3N	CT70, Edge Service, Gold Maintenance Contract, 3 Year, New Contract
ADD SVCREPLACE-MOB3	AddOn, Edge Service, Device Replacement, Mobility, 3 Year



CT70 CONFIGURATION MAP

Android

CONNECTIVITY SIM TECHNOLOGIES INTERFACE MEMORY SCAN ENGINE CAMERA BATTERY ANDROID DEPLOYMENT SOFTWARE REGION														DESCRIPTION	NOTES
CT70-															
	L													Wi-Fi 7 802.11 a/b/g/n/ac/mc/ax/be, 2x2 MU-MIMO + Bluetooth 6.0	IEEE 802.11 a/b/g/n/ac/d/h/i/r/k/v/w/mc/ax/be, 2x2 MU-MIMO ; Wi-Fi certified, Wi-Fi 7 and Wi-Fi 6E certified Bluetooth V6.0 and BLE Supported Bluetooth Profiles: HFP, PBAP, A2DP, AVRCP, OPP, SPP, GATT
	X													5G, LTE (4G) GPS, UMTS/HSPA+ (3G) GSM/GPRS/EDGE Wi-Fi 7 802.11 a/b/g/n/ac/mc/ax, 2x2 MU-MIMO + Bluetooth 6.0	WWAN RADIO (ATT/VZW/SPRINT/TMO/NA/EU) 5G FR1 – BANDS 1,2,3,4,5,7,8,12,14,20,25,28,30,38,40,41,48,66,71,77,78,79 LTE – BANDS 1,2,3,4,5,7,8,12,13,14,17,18,19,20,25,26,28,29,30,32,38,39,40,41,42,43,66,71 UMTS/HSPA+ (3G) – BANDS 1, 2, 4, 5, 6, 8, 9, 19 / GSM/GPRS/EDGE QUAD-BAND (850/900/1800/1900 MHZ) IEEE 802.11 a/b/g/n/ac/d/h/i/r/k/v/w/mc/ax, 2x2 MU-MIMO ; Wi-Fi certified, Wi-Fi 7 and Wi-Fi 6E certified Bluetooth V6.0 and BLE Supported Bluetooth Profiles: HFP, PBAP, A2DP, AVRCP, OPP, SPP, GATT
		0												No SIM	
		1												1 x Nano SIM & 1 x eSIM	
			N											Near Field Communications (NFC)	Integrated NFC reader, compliant with ISO/IEC 14443 A, ISO/IEC 14443 B, ISO/IEC 15693 (ICode), MIFARE 1K / 4K, MIFARE DESFire, Sony FeliCa, ISO/IEC 18092 (Type F)
			R											Near Field Communications (NFC) + UHF RFID	Integrated NFC reader, compliant with ISO/IEC 14443 A, ISO/IEC 14443 B, ISO/IEC 15693 (ICode), MIFARE 1K / 4K, MIFARE DESFire, Sony FeliCa, ISO/IEC 18092 (Type F)
				--											
					0									Full Touch	Qualcomm QCS6690/QCM6690 octa-core, 2.9GHz
						5								8GB RAM, 128GB Flash Memory	
							7							1D/2D Imager (S0703SR) – Standard Range	 
							8							1D/2D Imager (S0803FR) – FlexRange™	 
								C						13MP Rear Camera / 8MP Front Camera	
								E						Extended Battery	7,692mAh
								S						Standard Battery	4,775mAh
								W						Wireless Battery	4,775mAh
									1					Android (GMS)	Google Mobile Services (GMS) certified – Play Store
									2					Android (Non-GMS)	
										0				Standard	
											4			Device Client Pack	Device Client Pack (DCP) Pre-Loaded (1 Year DCP Term License - Honeywell Launcher, Enterprise Browser, BasicTE)
												G		Global (WWAN or Wi-Fi)	Algeria, Argentina, Australia, Austria, Belarus, Belgium, Bolivia, Brazil, Canada, Chile, Colombia , Costa Rica, Croatia, Czech Republic, Denmark, Dominican Republic, Ecuador, Egypt, Estonia, Finland, France, Germany, Greece, Guatemala, Hong Kong, Hungary, Ireland, Israel, Italy, Lithuania, Malaysia, Mexico, Morocco , Netherlands, New Zealand, Norway, Peru, Philippines, Poland, Portugal, Romania, Russian Fed., Saudi Arabia, Serbia, Singapore, Slovakia, Slovenia, South Africa, South Korea, Spain, Sweden, Switzerland, Taiwan, Thailand, Tunisia, Turkey, Qatar, UAE, Ukraine, United Kingdom, United States of America

HONEYWELL EDGE SERVICES

CT70 – Repair Services

Honeywell Edge Services give you the confidence of having leading-class technologies combined with service and support plans that are designed to keep you operational for longer. For a full description of maintenance services, including terms and conditions, please see <https://automation.honeywell.com/us/en/services/productivity-solutions/support-services/maintenance-services>

Gold Repair Services – 3 Year

The Edge Services Gold Support contract allows flexibility for you to select the right coverage for your organization, including 5-Day Depot Repairs and:

Service Overview

- Repair or replacement (at Honeywell discretion) for damaged components, wear and tear, accidental damage
- Flexibility to add any Add-On Service
- Android Service - includes Android OS Upgrades, Maintenance Releases and Security Patches

PART NUMBER	DESCRIPTION
SVCCT70-SG3N	CT70, Edge Service, GOLD Maintenance Contract, 5 Day Turnaround, 3 Year , New Contract

Add-On Accessory Replacement Service

Provides replacement chargers, docks, charging cables, or scan handles should they be damaged or stop working.

ADD	SVCACC-MOB3	AddOn, Edge Service, Accessory Service , Mobility, 3 Year . Service covers docks, charger cradles, scan handles
-----	-------------	--

Add-On Battery Replacement Service

Provides replacement batteries as needed after a minimum of 18 months post-purchase.

ADD	SVCBATTERY-MOB3	AddOn, Edge Service, Battery Service, Mobility, 3 Year , 1 Replacement Battery over life of contract
-----	-----------------	---

Add-On Device Replacement Service

Replacement devices should a device be damaged beyond repair.

ADD	SVCREPLACE-MOB3	AddOn, Edge Service, Device Replacement, Mobility, 3 Year
-----	-----------------	--

Add-On Image Management Service

Ensures that when a device returns from being repaired, it has all the proper applications loaded back on the device.

ADD	SVCIMAGEMGMT-MOB3	AddOn, Edge Service, Image Service, Mobility, 3 Year
-----	-------------------	---

Add-On Spare Management Service

Manages every aspect of your spare pool.

ADD	SVCSPAREMGMT-MOB3	AddOn, Edge Service, Advanced Exchange, Mobility, 3 Year . Customer owned spare pool, Minimum Purchase required, contact your local Honeywell Service Representative for more information.
-----	-------------------	---

Add-On 2-Day Turnaround Depot Upgrade

Upgrade your Gold Maintenance Contract from 5-Day to 2-Day turnaround at the repair depot.

ADD	SVC2DAYDEPOT-MOB3	AddOn, Edge Service, 2-Day Depot Upgrade, 3-Year Agreement, Requires purchase of a 3 Year Gold Maintenance Contract.
-----	-------------------	---

Platinum Repair Services – 3 Year

The Edge Services Platinum Support contract offers 2-Day Depot Repairs or Spare Pool Management with 3 year contract that includes:

Service Overview

- Repair or replacement (at Honeywell discretion) for damaged components, wear and tear, accidental damage
- SVCREPLACE-MOB3 - Replacement devices should a device be damaged beyond repair
- SVCACC-MOB3 - Accessory replacement service
- SVCBATTERY-MOB3 - Battery replacement service
- SVCSPAREMGMT-MOB3 - Spare pool management (optional, minimum quantity required)
- Telephone-based technical support
- Android Service - includes Android OS Upgrades, Maintenance Releases and Security Patches

PART NUMBER	DESCRIPTION
SVCCT70-SP3N	CT70, Edge Service, PLATINUM, 2 Day Turnaround, 3 Year , New Contract



HONEYWELL EDGE SERVICES

CT70 – Repair Services

Honeywell Edge Services give you the confidence of having leading-class technologies combined with service and support plans that are designed to keep you operational for longer. For a full description of maintenance services, including terms and conditions, please see <https://automation.honeywell.com/us/en/services/productivity-solutions/support-services/maintenance-services>

Gold Repair Services – 5 Year

The Edge Services Gold Support contract allows flexibility for you to select the right coverage for your organization, including 5-Day Depot Repairs and:

Service Overview

- Repair or replacement (at Honeywell discretion) for damaged components, wear and tear, accidental damage
- Flexibility to add any Add-On Service
- Android Service - includes Android OS Upgrades, Maintenance Releases and Security Patches

PART NUMBER	DESCRIPTION
SVCCT70-SG5N	CT70, Edge Service, GOLD Maintenance Contract, 5 Day Turnaround, 5 Year , New Contract

Add-On Accessory Replacement Service

Provides replacement chargers, docks, charging cables, or scan handles should they be damaged or stop working.

ADD	SVCACC-MOB5	AddOn, Edge Service, Accessory Service , Mobility, 5 Year . Service covers docks, charger cradles, scan handles
------------	-------------	--

Add-On Battery Replacement Service

Provides replacement batteries as needed after a minimum of 18 months post-purchase.

ADD	SVCBATTERY-MOB5	AddOn, Edge Service, Battery Service, Mobility, 5 Year , 2 Replacement Battery over life of contract
------------	-----------------	---

Add-On Device Replacement Service

Replacement devices should a device be damaged beyond repair.

ADD	SVCREPLACE-MOB5	AddOn, Edge Service, Device Replacement, Mobility, 5 Year
------------	-----------------	--

Add-On Image Management Service

Ensures that when a device returns from being repaired, it has all the proper applications loaded back on the device.

ADD	SVCIMAGEMGMT-MOB5	AddOn, Edge Service, Image Service, Mobility, 5 Year
------------	-------------------	---

Add-On Spare Management Service

Manages every aspect of your spare pool.

ADD	SVCSPAREMGMT-MOB5	AddOn, Edge Service, Advanced Exchange, Mobility, 5 Year . Customer owned spare pool, Minimum Purchase required, contact your local Honeywell Service Representative for more information.
------------	-------------------	---

Add-On 2-Day Turnaround Depot Upgrade

Upgrade your Gold Maintenance Contract from 5-Day to 2-Day turnaround at the repair depot.

ADD	SVC2DAYDEPOT-MOB5	AddOn, Edge Service, 2-Day Depot Upgrade, 5-Year Agreement, Requires purchase of a 5 Year Gold Maintenance Contract.
------------	-------------------	---

Platinum Repair Services – 5 Year

The Edge Services Platinum Support contract offers 2-Day Depot Repairs or Spare Pool Management with 5 year contract that includes:

Service Overview

- Repair or replacement (at Honeywell discretion) for damaged components, wear and tear, accidental damage
- SVCREPLACE-MOB5 - Replacement devices should a device be damaged beyond repair
- SVCACC-MOB5 - Accessory replacement service
- SVCBATTERY-MOB5 - Battery replacement service
- SVCSPAREMGMT-MOB5 - Spare pool management (optional, minimum quantity required)
- Telephone-based technical support
- Android Service - includes Android OS Upgrades, Maintenance Releases and Security Patches

PART NUMBER	DESCRIPTION
SVCCT70-SP5N	CT70, Edge Service, PLATINUM, 2 Day Turnaround, 5 Year , New Contract



HONEYWELL REPAIR SERVICES

CT70 – Repair Services Coverage

Service options tailored to customer requirements

BASIC

CT70



Warranty Cover Against Product Defect

GOLD

Gold Coverage:

- Accidental Damage
- Wear & Tear
- Android Service

Includes Replacement of:

- Handstrap
- Screen Protector



Flexible GOLD Add-Ons ordered separately

• SVCACC-MOB3	Accessories
• SVCBATTERY-MOB3	Batteries
• SVCREPLACE-MOB3	Device Replacement
• SVCIMAGEMGMT-MOB3	Image Service
• SVCSPAREMGMT-MOB3	Advanced Exchange

PLATINUM

Platinum Coverage

- Battery Replacement
- Coverage for Docks/ Chargers
- Android Service



Pistol Grip



Battery



Vehicle Dock



Docks



Cups



Dock Power Supplies

- Accidental Damage
- Device Replacement
- Wear & Tear

COVERAGE	PART NUMBER	DESCRIPTION
BASIC	SVCCT70-EXW2	CT70, BASIC, 10-15 Day Turnaround, 2 Years (1 Year Factory Warranty + 1 Year Extended)
GOLD	SVCCT70-SG3N	CT70, Edge Service, GOLD Maintenance Contract, 5 Day Turnaround, 3 Year, New Contract
ADD	SVCACC-MOB3	AddOn, Edge Service, Accessory Service , Mobility, 3 Year. Service covers docks, charger cradles, scan handles and car adapter
ADD	SVCBATTERY-MOB3	AddOn, Edge Service, Battery Service, Mobility, 3 Year, 1 Replacement Battery over life of contract
ADD	SVCREPLACE-MOB3	AddOn, Edge Service, Device Replacement, Mobility, 3 Year
ADD	SVCIMAGEMGMT-MOB3	AddOn, Edge Service, Image Service, Mobility, 3 Year
ADD	SVCSPAREMGMT-MOB3	AddOn, Edge Service, Advanced Exchange, Mobility, 3 Year. Customer owned spare pool, Minimum Purchase required.
PLATINUM	SVCCT70-SP3N	CT70, Edge Service, PLATINUM, 2 Day Turnaround, 3 Year, New Contract

Honeywell

CT70 Configuration Guide | automation.honeywell.com | 13

CT70 SOFTWARE

Device Client Pack

The Device Client Pack (DCP) includes Launcher, Enterprise Browser, BasicTE, and Mobility Web SDK, these applications are pre-loaded on the device.

All CT70 units include a 1 Year DCP Termed Pre-License for initial evaluation of the DCP applications (it does NOT include a Perpetual Pre-License), after the 1 Year Term period expires, a Perpetual or Term license is required to be purchased.

There are two licensing options that can be purchased for DCP:

1. Perpetual License

Purchase DCP-001 - Perpetual Licenses operate without expiration for the authorized software version features, and includes 1 year of Maintenance. Add additional Software Maintenance separately.

2. Term + Maintenance License

Purchase DCP-SFT1, DCP-SFT2, DCP-SFT3, DCP-SFT4 or DCP-SFT5 - Term + Maintenance Licenses provide software operation, software new version features, and tech support, all for a defined period.

Device Client Pack

Order Separately



Launcher



BasicTE



Enterprise Browser



SmartTE Terminal Emulator



Launcher - gives the customer total control over which apps can be run on the device.



BasicTE Android device Terminal Emulation is a simplified alternative for those not yet ready to upgrade to SmartTE.



Enterprise Browser provides corporations the ability to run standard web applications from a controlled environment.



Terminal Emulator – Full featured SmartTE allows legacy green screen apps to be transformed to the look and feel of native apps. They can also utilize traditional single or multi-session StayLinked Licenses. SmartTE is Pre-Loaded, but requires a license to be purchased separately.

PART NUMBER	DESCRIPTION
DCP-001	Device Client Pack - Perpetual License + 1 Year Maintenance (License covers Launcher, Enterprise Browser, BasicTE, and Mobility Web SDK)
DCP-SFT1	Device Client Pack - 1 Year Term + Maintenance (License covers Launcher, Enterprise Browser, BasicTE, and Mobility Web SDK)
DCP-SFT2	Device Client Pack - 2 Year Term + Maintenance (License covers Launcher, Enterprise Browser, BasicTE, and Mobility Web SDK)
DCP-SFT3	Device Client Pack - 3 Year Term + Maintenance (License covers Launcher, Enterprise Browser, BasicTE, and Mobility Web SDK)
DCP-SFT4	Device Client Pack - 4 Year Term + Maintenance (License covers Launcher, Enterprise Browser, BasicTE, and Mobility Web SDK)
DCP-SFT5	Device Client Pack - 5 Year Term + Maintenance (License covers Launcher, Enterprise Browser, BasicTE, and Mobility Web SDK)

PART NUMBER	DESCRIPTION
SL-TE-S-LICMAINT	Stay-Linked Single Thin Client License plus First Year Maintenance
SL-TE-S-LICMAINT3	Stay-Linked Single Thin Client License plus 3 Year Maintenance
SL-TE-S-LICMAINT5	Stay-Linked Single Thin Client License plus 5 Year Maintenance
SL-TE-S-MAINT-R	Stay-Linked Single Thin Client Annual Maintenance After Initially Purchased Term
SMARTTE-SND-SFT1	SmartTE - High availability secondary backup or development server 1yr maintenance. Not for primary server. Purchase one per device.

CT70 SOFTWARE

Ivanti Velocity

Ivanti Velocity is an industrial mobile client that incorporates support for both telnet and web host applications, designed with barcode scanning and text input in mind, Velocity integrates with Honeywell mobile computers and supports fully customizable context sensitive keyboards to ensure accuracy and speed of data input. There are seperate licenses for Velocity TE or Velocity WEB that can be purchased, only subscription licenses are available to order.

Velocity TE



Native Mode



Modernization



Velocity WEB



Velocity TE - Terminal Emulation that supports the most commonly used emulation types, including VT, 5250 and 3270. Easily set up controls that validate, convert and parse data from scanned barcode data and streamline workflows by automating common functions. Create custom keyboard maps and host profiles as well as hot keys to shortcut common commands and processes.

Velocity WEB - Industrial Browser is a locked down user experience, with no web address bar and hidden browser navigation buttons ensuring that users focus on the transaction at hand. Ensure that web host application screens are optimized for a mobile display without having to touch the host application.

PART NUMBER	REGION	DESCRIPTION
VELOCTE-OEM-1-HON	All except EU	Ivanti Velocity TE OEM 1 Year Subscription , includes 1 year software maintenance.
VELOCTE-OEM-3-HON	All except EU	Ivanti Velocity TE OEM 3 Year Subscription , includes 3 years software maintenance.
VELOCTE-OEM-5-HON	All except EU	Ivanti Velocity TE OEM 5 Year Subscription , includes 5 years software maintenance.
VELOCTE-OEM-1-HON-EU	EU Only	Ivanti Velocity TE OEM 1 Year Subscription , includes 1 year software maintenance - Euro.
VELOCTE-OEM-3-HON-EU	EU Only	Ivanti Velocity TE OEM 3 Year Subscription , includes 3 years software maintenance - Euro.
VELOCTE-OEM-5-HON-EU	EU Only	Ivanti Velocity TE OEM 5 Year Subscription , includes 5 years software maintenance - Euro.

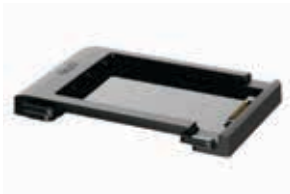
PART NUMBER	REGION	DESCRIPTION
VELOCWEB-OEM-1-HON	All except EU	Ivanti Velocity WEB OEM 1 Year Subscription , includes 1 year software maintenance.
VELOCWEB-OEM-3-HON	All except EU	Ivanti Velocity WEB OEM 3 Year Subscription , includes 3 years software maintenance.
VELOCWEB-OEM-5-HON	All except EU	Ivanti Velocity WEB OEM 5 Year Subscription , includes 5 years software maintenance.
VELOCWEB-OEM-1-HEU	EU Only	Ivanti Velocity WEB OEM 1 Year Subscription , includes 1 year software maintenance - Euro.
VELOCWEB-OEM-3-HEU	EU Only	Ivanti Velocity WEB OEM 3 Year Subscription , includes 3 years software maintenance - Euro.
VELOCWEB-OEM-5-HEU	EU Only	Ivanti Velocity WEB OEM 5 Year Subscription , includes 5 years software maintenance - Euro.

CT70 ACCESSORIES

Chargers



CT70-UCP
Universal Cup



CT70-UCP-BAT
Home Base Battery Cup



CT70-HB-UVX-0
Home Base



CT70-EB-UVX-0
eHome Base (Ethernet)



CT70-DB-UVX-0
Display Base (Ethernet, HDMI)



CT70-VD-WD
Vehicle Dock (Wired)



CT70-QBC-CUP
Quad Battery Cup



CT70-QBC-0
Quad Battery Charger



CT70-16BAY-BAT-0
16 Bay Battery Charger



CT70-CB-UVX-0
Quad Charge Base



CT70-NB-UVX-0
Quad Net Base (Ethernet)



CT70-VD-WL-SPK
Vehicle Dock (Wireless)



CT70-5CB-UVX-BAT-0
5 Bay Charge Base
+ Quad Battery Charger



CT70-5NB-UVX-BAT-0
5 Bay Net Base (Ethernet)
+ Quad Battery Charger



CT70-5CB-UVX-0
5 Bay Charge Base



CT70-5NB-UVX-0
5 Bay Net Base (Ethernet)

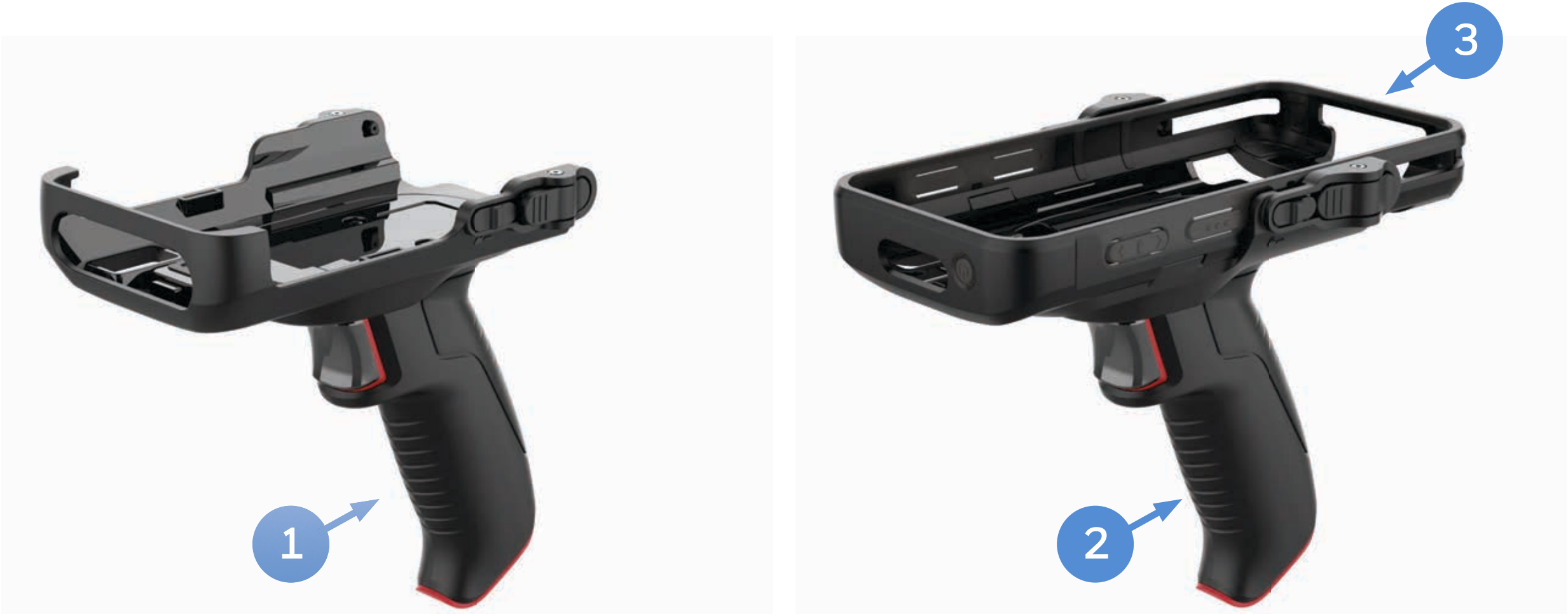


5CB-UVX-0
5 Bay Charge Base (No Cups)

CT70 SCANNING

Scan Handle Side by Side Comparison

Use for Scan intensive applications.
Scan Handles are compatible with CT70 Extended Battery (CT70-BTEC-001)



	PART NUMBER	DESCRIPTION
1	CT70-SH-UVN	CT70 Non-Booted scan handle; Compatible with CT70 (with standard and extended battery) without protective boot
2	CT70-SH-UVB	CT70 Booted scan handle; Compatible with CT70 (with standard and extended battery) with protective boot; Protective boot must be ordered separately.
3	CT70-PB-GRY	CT70 Protective Boot

CT70 SCANNING

Option 1 - Scan Handle

Use for Scan intensive applications, also compatible with using Rear Camera with Scan Handle installed.
Compatible with CT70 Extended Battery (CT70-BTEC-001)



Side View



Rear View

PART NUMBER		DESCRIPTION
1	CT70-SH-UVN	CT70 Non-Booted scan handle; Compatible with CT70 (with standard and extended battery) without protective boot

CT70 SCANNING

Option 2 – Scan Handle with Protective Boot

Use for Scan intensive applications with additional protection of the protective boot.
Compatible with CT70 Extended Battery (CT70-BTEC-001)



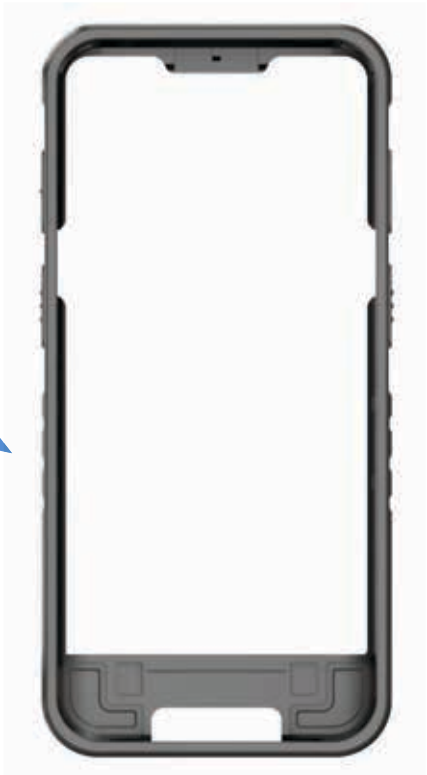
	PART NUMBER	DESCRIPTION
1	CT70-SH-UVB	CT70 Booted scan handle; Compatible with CT70 (with standard and extended battery) with protective boot; Protective boot must be ordered
2	CT70-PB-GRY	CT70 Protective Boot

CT70 PROTECTIVE BOOT

Dockable Protective Boot

Use when protective boot is required with or without scan handle and dockable, compatible with handstrap installed.

1



Standard Battery and Handstrap



Extended Battery and Handstrap

Extended Battery

	PART NUMBER	DESCRIPTION
1	CT70-PB-GRY	CT70 Protective Boot

CT70 DESKTOP COMMUNICATIONS

Option 1 – USB Type C On-The-Go (OTG) Desktop

USB C Communication to PC/ Mac OR Charging.



	PART NUMBER	DESCRIPTION
1	CBL-500-120-S00-06	USB type A to type C, 1.2 m (3.9 ft)
2	50136024-001	KIT,5V/2A PS,5 PLUGS PACKED, ROW Includes US,UK,AU,EU,IN adapters

Option 2 – Portable – USB-C (Quick Charge)

USB Communication to PC/ Mac OR Snap-On Charging with Quick Charging 3.0 support.



	PART NUMBER	DESCRIPTION
1	3013-0415-001	KIT, QC3.0 quick charging adaptor with 1.2m dual type-C cable, Black, US/Canada/Japan
OR	3013-0416-001	KIT, QC3.0 quick charging adaptor with 1.2m dual type-C cable, Black, EU/Turkey
OR	3013-0417-001	KIT, QC3.0 quick charging adaptor with 1.2m dual type-C cable, Black, United Kingdom
OR	3013-0418-001	KIT, QC3.0 quick charging adaptor with 1.2m dual type-C cable, Black, Australia/New Zealand

CT70 DESKTOP COMMUNICATIONS

Option 3 – Fixed with Universal Cup

USB and optional Ethernet Communication & Single Battery Charger.

- Supports Batteries:
- CT70-BTSC-001 - Battery Pack, Standard CT70 (4775mAh)

CT70-BTEC-001 - Battery Pack, Extended CT70 (7692mAh)

CT70-BTWC-001 - Battery Pack, Wireless CT32 (4775mAh)

Compatible with both Booted and Non-Booted CT70.



	PART NUMBER	DESCRIPTION
1	CT70-HB-UVX-0	HomeBase - Kit includes (CT70-UCP with Non-Booted insert), Dock & Power Supply, No Power Cord
OR	CT70-EB-UVX-0	eHomeBase - Ethernet Kit includes (CT70-UCP with Non-Booted insert), Dock & Power Supply, No Power Cord
2	321-576-004	Cable Assembly - USB Type A to Type B
3	**	IEC C13 AC Power Cord – See Page 47 for Country Specific Power Cords
4	CT70-BTSC-001	Battery Pack, Standard CT70 (4775mAh)

CT70 DESKTOP COMMUNICATIONS

Option 4 – Display Base with Universal Cup

Connect USB peripherals (keyboard, mouse) and External Monitor via HDMI.

Display Base supports:

- Primary Mode
- Mirror Mode
- Desktop Mode - requires additional Device Client Pack (DCP) license.

Compatible with both Booted and Non-Booted CT70.



Ethernet USB A HDMI POWER
Rear View



2 x USB Type A on the side
Side View



	PART NUMBER	DESCRIPTION
1	CT70-DB-UVX-0	Display Dock - Kit includes (CT70-UCP with Non-Booted insert), Dock & Power Supply, No Power Cord
2	**	IEC C13 AC Power Cord – See Page 47 for Country Specific Power Cords

CT70 VEHICLE INSTALL

Option 1 – Portable/ Sub Contractor Install

Simple Vehicle Charging, portable between vehicles.
Compatible with both Booted and Non-Booted CT70.



	PART NUMBER	DESCRIPTION
1	CBL-500-120-S00-06	USB type A to type C, 1.2 m (3.9 ft)
2	CT45-CIGR-1	Charging CT70, CT45, CT45XP, CT40 and CT40XP configurations on vehicle. Quick Charge 3.0 compliant. Requires USB cable (CBL-500-120-S00-06) to be ordered separately. (Converts 12 V/24 V cigarette lighter port to USB type-A power adapter for snap-on use in a vehicle)

Option 2 – Portable/ Sub Contractor Install

Windscreen Suction Cup Mount, portable between vehicles.
Compatible with both Booted and Non-Booted CT70.



	PART NUMBER	DESCRIPTION
1	CT70-VD-WD	CT70 Wired Vehicle Dock. For charging CT70 with or without a protective boot installed, compatible with hand strap. Kit includes vehicle dock, 4 x mounting screws and convertible adaptor insert.
2	RAM-B-166-202U	Suction Cup Mount Kit
3	50138169-001	Cigarette Lighter Power Adapter Cable

CT70 VEHICLE INSTALL

Option 3 – Fixed Vehicle Install with Direct Connection to Vehicle Battery

Best used when the vehicle input voltage varies, 10-30V.
Compatible with both Booted and Non-Booted CT70.
Compatible with CT70 Standard Battery (CT70-BTSC-001)
Compatible with CT70 Wireless Battery (CT70-BTWC-001)
Compatible with CT70 Extended Battery (CT70-BTEC-001)



	PART NUMBER	DESCRIPTION
1	CT70-VD-WD	CT70 Wired Vehicle Dock. For charging CT70 with or without a protective boot installed, compatible with hand strap. Kit includes vehicle dock, 4 x mounting screws and convertible adaptor insert.
2	203-802-001	Vehicle Dock Installation Kit (Power Option: For connection of Vehicle Dock directly to vehicle battery. Includes power cables and cable mounting hardware)
3	805-611-001	Mounting Kit, V-Dock RoHS

CT70 VEHICLE INSTALL

Option 4 - Fixed Vehicle Install with Direct Connection to Vehicle Battery/ Fuse Block

Best used when the vehicle input voltage varies, 10-30V.
Compatible with both Booted and Non-Booted CT70.
Compatible with CT70 Standard Battery (CT70-BTSC-001)
Compatible with CT70 Wireless Battery (CT70-BTWC-001)
Compatible with CT70 Extended Battery (CT70-BTEC-001)

CT70 Non-Booted

CT70 Booted
CT70-PB-GRY



	PART NUMBER	DESCRIPTION
1	CT70-VD-WD	CT70 Wired Vehicle Dock. For charging CT70 with or without a protective boot installed, compatible with hand strap. Kit includes vehicle dock, 4 x mounting screws and convertible adaptor insert.
2	226-109-003	72" (182.88 cm) Fuse block Power Cable with spade lugs and 3-pin connector
OR	226-109-004	22" (55.8 cm) Fuse block Power Cable with spade lugs and 3-pin connector
3	805-611-001	Mounting Kit, V-Dock RoHS
OPTIONAL	203-803-001	Vehicle Dock Fuse Block Power Kit RoHS (Provides connection to vehicle fuse block). Requires Power Cable (226-109-003 or 226-109-004).

CT70 VEHICLE INSTALL

Option 5 – Fixed Vehicle Install with Thor DC/DC Converter

Best used when the vehicle input voltage varies, 9-60V or 50-150V.
Compatible with both Booted and Non-Booted CT70.
Compatible with CT70 Standard Battery (CT70-BTSC-001)
Compatible with CT70 Wireless Battery (CT70-BTWC-001)
Compatible with CT70 Extended Battery (CT70-BTEC-001)



	PART NUMBER	DESCRIPTION
1	CT70-VD-WD	CT70 Wired Vehicle Dock. For charging CT70 with or without a protective boot installed, compatible with hand strap. Kit includes vehicle dock, 4 x mounting screws and convertible adaptor insert.
2	9000311PWRSPLY	DC/DC Converter Kit, 9-60V DC, RoHS (Requires 226-109-003 Wiring Harness)
OR	9000313PWRSPLY	DC/DC Converter Kit, 50-150V DC RoHS (Requires 226-109-003 Wiring Harness)
	226-109-003	72" (182.88 cm) Fuse block Power Cable with spade lugs and 3-pin connector
3	805-611-001	Mounting Kit, V-Dock RoHS

CT70 VEHICLE INSTALL

CT70 Wired Vehicle Dock (CT70-VD-WD) Detail View

Compatible with both Booted and Non-Booted CT70.



Angle View
CT70 Insert



Angle View
CT70 Boot



Front View



Rear View



Angle View
CT70 Non-Booted



Angle View
CT70 Booted



Top View



Bottom View

CT70 VEHICLE INSTALL WIRELESS CHARGING

Option 1 - Fixed Vehicle Install with Direct Connection to Vehicle Battery - External Speaker

Best used when the vehicle input voltage varies, 10-30V.
Compatible with both Booted and Non-Booted CT70.
Compatible with CT70 Wireless Battery (CT70-BTWC-001)
Not Compatible with CT70 Standard Battery (CT70-BTSC-001)
Not Compatible with CT70 Extended Battery (CT70-BTEC-001)



	PART NUMBER	DESCRIPTION
1	CT70-VD-WL-SPK	CT70 Wireless Vehicle Dock with External Speaker. For charging CT70 with a Wireless Battery, with or without a protective boot installed.
2	203-802-001	Vehicle Dock Installation Kit (Power Option: For connection of Vehicle Dock directly to vehicle battery. Includes power cables and cable mounting hardware)
3	805-611-001	Mounting Kit, V-Dock RoHS

CT70 VEHICLE INSTALL WIRELESS CHARGING

Option 2 - Fixed Vehicle Install with Direct Connection to Vehicle Battery/ Fuse Block - External Speaker

Best used when the vehicle input voltage varies, 10-30V.
Compatible with both Booted and Non-Booted CT70.
Compatible with CT70 Wireless Battery (CT70-BTWC-001)
Not Compatible with CT70 Standard Battery (CT70-BTSC-001)
Not Compatible with CT70 Extended Battery (CT70-BTEC-001)

CT70 Non-Booted

CT70 Booted
CT70-PB-GRY



	PART NUMBER	DESCRIPTION
1	CT70-VD-WL-SPK	CT70 Wireless Vehicle Dock with External Speaker. For charging CT70 with a Wireless Battery, with or without a protective boot installed.
2	226-109-003	72" (182.88 cm) Fuse block Power Cable with spade lugs and 3-pin connector
OR	226-109-004	22" (55.8 cm) Fuse block Power Cable with spade lugs and 3-pin connector
3	805-611-001	Mounting Kit, V-Dock RoHS
OPTIONAL	203-803-001	Vehicle Dock Fuse Block Power Kit RoHS (Provides connection to vehicle fuse block). Requires Power Cable (226-109-003 or 226-109-004).

CT70 VEHICLE INSTALL WIRELESS CHARGING

Option 3 – Fixed Vehicle Install with Thor DC/DC Converter – External Speaker

Best used when the vehicle input voltage varies, 9-60V or 50-150V.
Compatible with both Booted and Non-Booted CT70.
Compatible with CT70 Wireless Battery (CT70-BTWC-001)
Not Compatible with CT70 Standard Battery (CT70-BTSC-001)
Not Compatible with CT70 Extended Battery (CT70-BTEC-001)



	PART NUMBER	DESCRIPTION
1	CT70-VD-WL-SPK	CT70 Wireless Vehicle Dock with External Speaker. For charging CT70 with a Wireless Battery, with or without a protective boot installed.
2	9000311PWRSPLY	DC/DC Converter Kit, 9-60V DC, RoHS (Requires 226-109-003 Wiring Harness)
OR	9000313PWRSPLY	DC/DC Converter Kit, 50-150V DC RoHS (Requires 226-109-003 Wiring Harness)
	226-109-003	72" (182.88 cm) Fuse block Power Cable with spade lugs and 3-pin connector
3	805-611-001	Mounting Kit, V-Dock RoHS

CT70 VEHICLE INSTALL WIRELESS CHARGING

CT70 Wireless Vehicle Dock (CT70-VD-WL-SPK) Detail View

Compatible with both Booted and Non-Booted CT70.



Angle View
CT70 Insert



Angle View
CT70 Boot



Front View



Rear View



Angle View
CT70 Non-Booted



Angle View
CT70 Booted



Top View



Bottom View

CT70 CHARGING AND COMMUNICATION

Option 1 – Quad Charger with Universal Cup

Chargebase – Quad Dock Charge Only



Kit Includes:
4 x CT70-UCP CT70 Cup

	PART NUMBER	DESCRIPTION
1	CT70-CB-UVX-0	Chargebase - Kit includes Dock and Power Supply
2	**	IEC C13 AC Power Cord – See Page 47 for Country Specific Power Cords

Option 2 – Quad Charger with Universal Cup

Netbase – Quad Dock with Ethernet



Kit Includes:
4 x CT70-UCP CT70 Cup

	PART NUMBER	DESCRIPTION
1	CT70-NB-UVX-0	Netbase - For Ethernet comms, Kit includes Dock and Power Supply
2	**	IEC C13 AC Power Cord – See Page 47 for Country Specific Power Cords

CT70 CHARGING AND COMMUNICATION

Option 3 – 5-Bay Charger with Universal Cups

Chargebase – 5-Bay Dock Charge Only (5 terminals)
Netbase – 5-Bay Dock with Ethernet
Compatible with Scan Handle
Compatible with both Booted and Non-Booted CT70.



Top View with Scan Handle installed



Kit Includes:
5 x CT70-UCP CT70 Cup

PART NUMBER		DESCRIPTION
1	CT70-5CB-UVX-0	CT70 5 bay Universal Dock, charge up to 5 pieces of CT70. Kit includes 5 bay Universal Dock and Power Adaptor. IEC C5 Power cord must be ordered separately.
OR	CT70-5NB-UVX-0	CT70 5 bay Ethernet Universal Dock, for charging up to 5 pieces of CT70. Kit includes 1 piece of 5 bay Universal NetBase, 5 pieces of CT70 cups and Power Adapter. IEC C5 Power cord must be ordered separately.
2	**	IEC C5 AC Power Cord – See Page 47 for Country Specific Power Cords



Option 4 – 5-Bay Charger with Battery Cup

Chargebase – Quad Dock Charge Only (4 terminals) and Quad Battery Charger (4 Batteries)
Netbase – Quad Dock Ethernet (4 terminals) and Quad Battery Charger (4 Batteries)
Compatible with Scan Handle
Compatible with both Booted and Non-Booted CT70.



Top View with Scan Handle installed



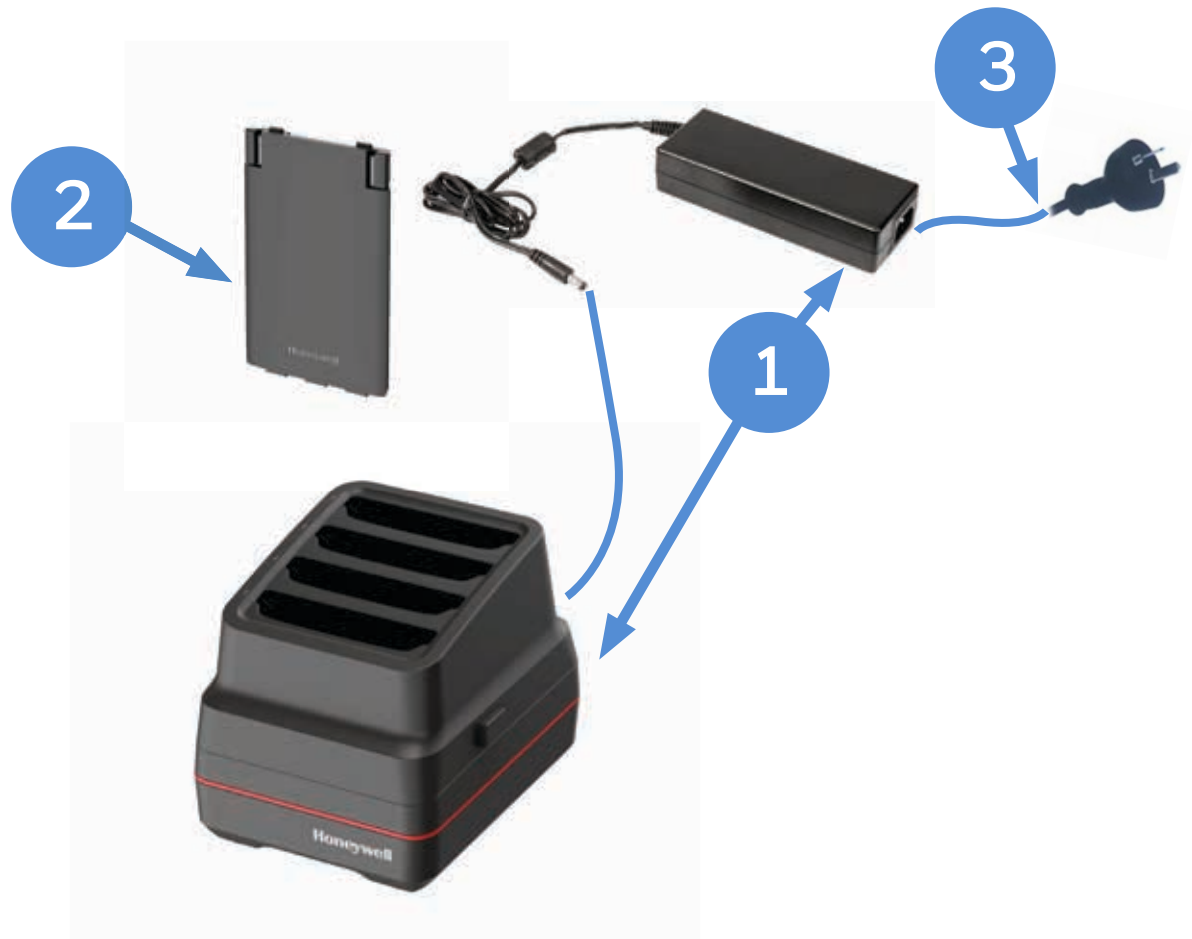
Kit Includes:
4 x CT70-UCP CT70 Cup
1 x CT70-QBC-CUP CT70 Quad Battery Cup

PART NUMBER		DESCRIPTION
1	CT70-5CB-UVX-BAT-0	CT70 5 bay Universal Dock, charge up to 4 pieces of CT70 and 4 pieces of CT70 batteries. Kit includes 5 bay Universal Dock and Power Adaptor. IEC C5 Power cord must be ordered separately.
OR	CT70-5NB-UVX-BAT-0	CT70 5 bay Ethernet Universal Dock, for charging up to 4 pieces of CT70 and 4 pieces of CT70 batteries. Kit includes 1 piece of 5 bay Universal NetBase, 4 pieces of CT70 cups, 1 piece of CT70 battery cup and Power Adapter. IEC C5 Power cord must be ordered separately.
2	**	IEC C5 AC Power Cord – See Page 47 for Country Specific Power Cords

CT70 CHARGING AND COMMUNICATION

Option 5 – 4-Bay Battery Charger

Charge up to 4 batteries simultaneously
Supports Batteries: CT70-BTSC-001 - Battery Pack, Standard CT70 (4775mAh)
CT70-BTEC-001 - Battery Pack, Extended CT70 (7692mAh)
CT70-BTWC-001 - Battery Pack, Wireless CT32 (4775mAh)

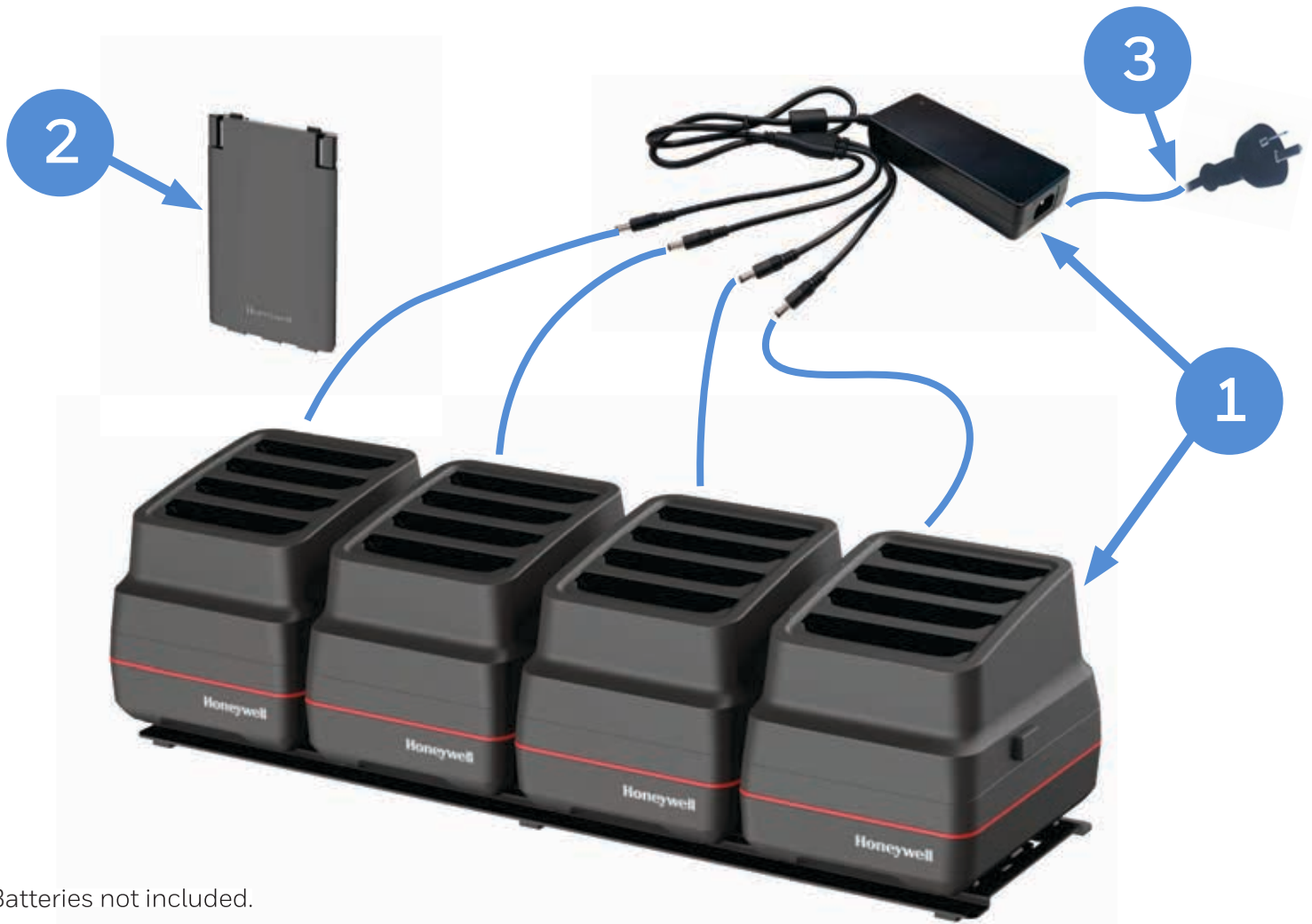


Batteries not included.

	PART NUMBER	DESCRIPTION
1	CT70-QBC-0	Quad Battery Charger - Kit includes Dock and Power Supply
2	**	Spare Battery – See Page 38 for Battery Selection
3	**	IEC C13 AC Power Cord – See Page 47 for Country Specific Power Cords

Option 6 – 16-Bay Battery Charger

Charge up to 16 batteries simultaneously
Supports Batteries: CT70-BTSC-001 - Battery Pack, Standard CT70 (4775mAh)
CT70-BTEC-001 - Battery Pack, Extended CT70 (7692mAh)
CT70-BTWC-001 - Battery Pack, Wireless CT32 (4775mAh)



Batteries not included.

	PART NUMBER	DESCRIPTION
1	CT70-16BAY-BAT-0	16-Bay Battery Charger - Kit includes Dock and Power Supply
2	**	Spare Battery – See Page 38 for Battery Selection
3	**	IEC C13 AC Power Cord – See Page 47 for Country Specific Power Cords

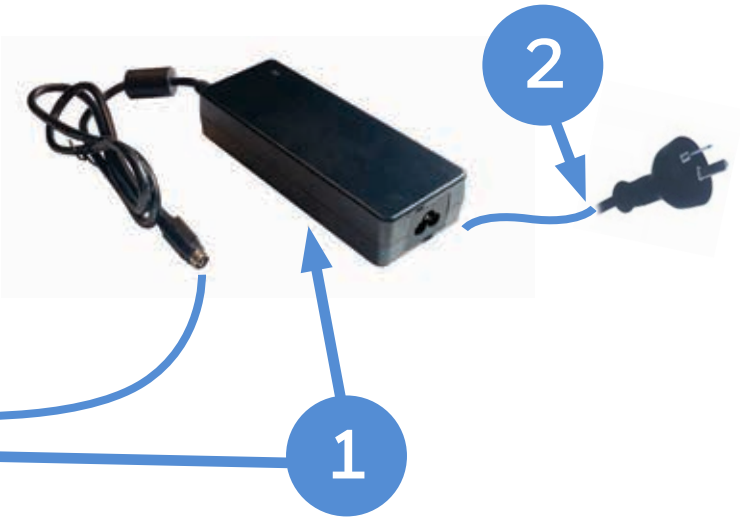
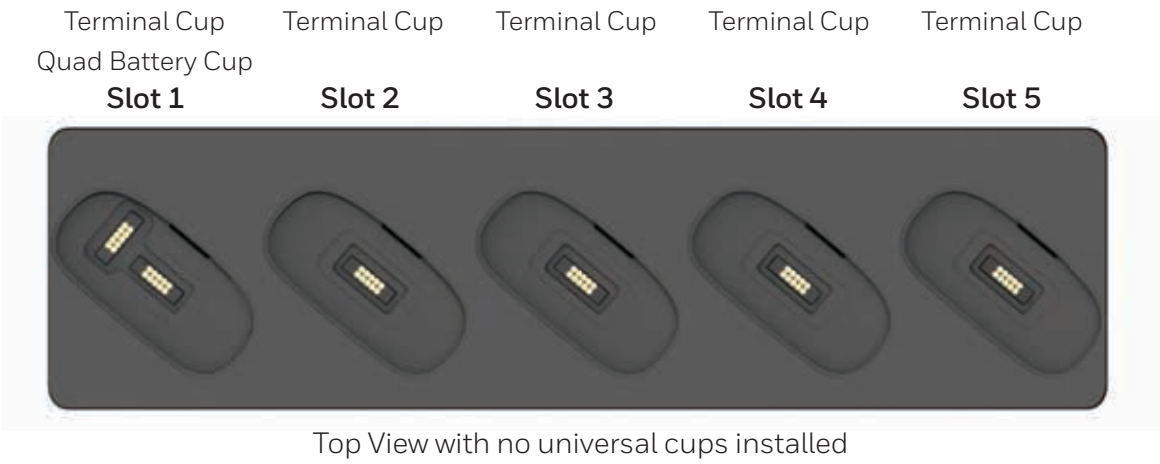
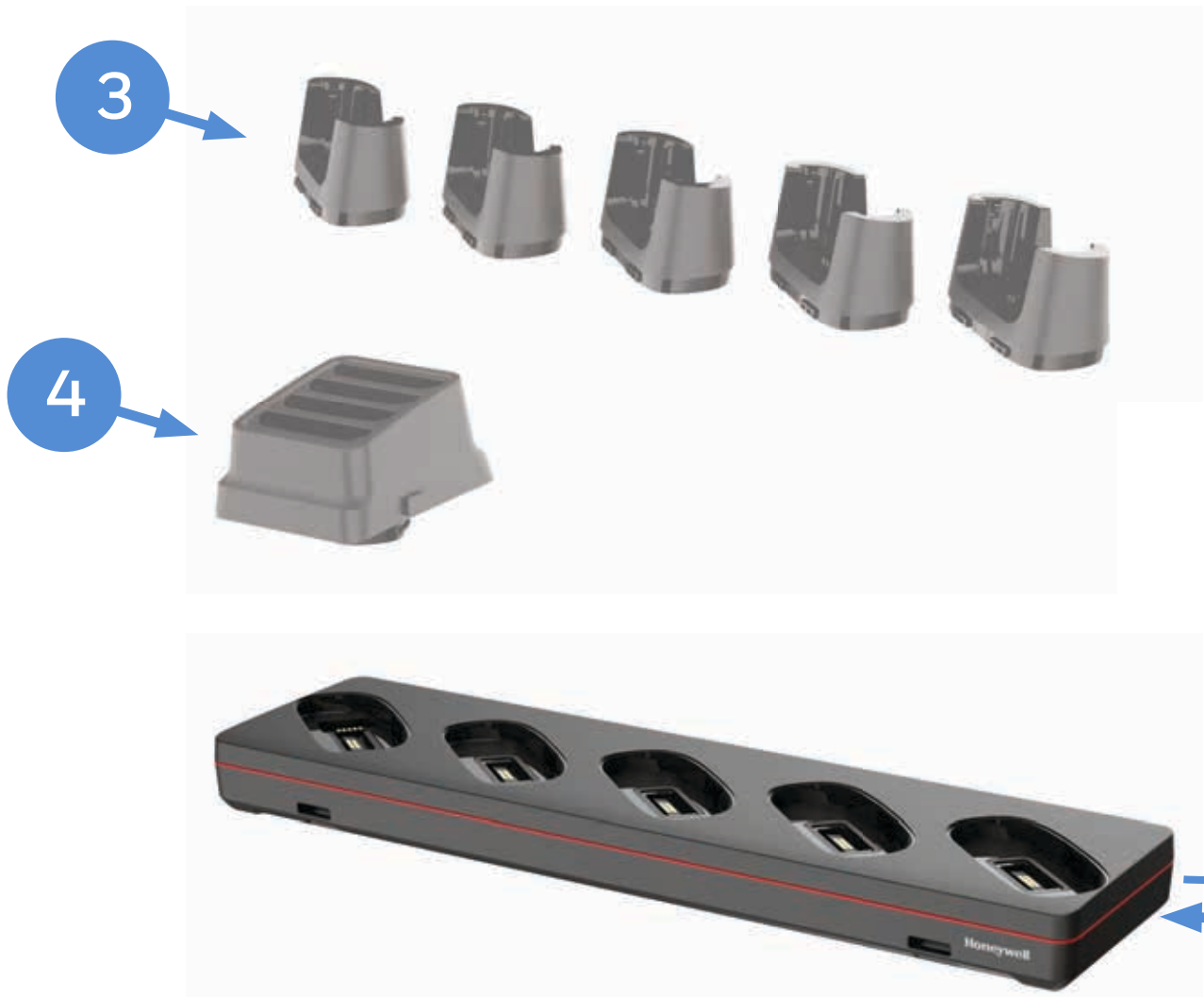
CT70 CHARGING AND COMMUNICATION

Option 7 – 5-Bay Charge Base Only – Order Cups Separately

Create your own configuration of 5 Bay charge base by adding the required universal cups to the 5 Bay base.

Chargebase – Quad Dock Charge Only (4 terminals) and Quad Battery Charger (4 Batteries)

Chargebase – 5-Bay Dock Charge Only (5 terminals)

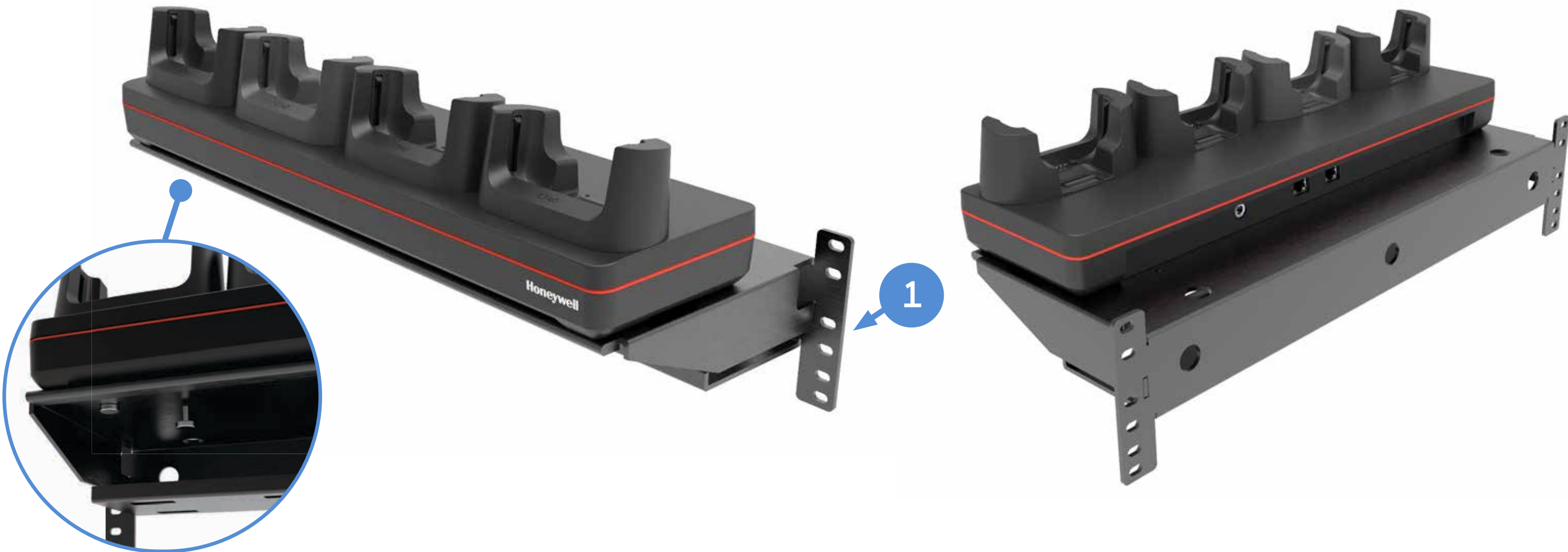


	QUANTITY	PART NUMBER	DESCRIPTION	
	1	1 x	5CB-UVX-0	5 bay Universal Dock Charge Base. Kit includes 5 bay Universal Dock Base and Power Adaptor. IEC C5 Power cord must be ordered separately.
	2	1 x	**	IEC C5 AC Power Cord – See Page 47 for Country Specific Power Cords
OPTIONAL	3	Up to 5	CT70-UCP	CT70 Universal cup, remove the insert to use CT70 with protective boot
OPTIONAL	4	1 x	CT70-QBC-CUP	CT70 Universal Quad Battery Cup

CT70 CHARGING AND COMMUNICATION

Rack / Wall Mount Bracket

The Rack/Wall Mount Bracket has been optimized to work on a standard 19-inch (48cm) rack, as well as mounting directly onto a wall. Compatible with all 4-bay chargers.



Thumb Screws View



Front View



Rear View



Power Supply Shelf View



Bottom View

	PART NUMBER	DESCRIPTION
1	CB-BK-01	4 Bay Charger Bracket, Rack / Wall Mount (includes 4 x 50180100-001 Thumb Screws M3.5x10 to securely attach the 4-bay dock to the bracket)

CT70 BATTERY

Spare Battery Options



CT70 Standard Battery
CT70-xxx-xxxxSxxxx

CT70 Extended Battery
CT70-xxx-xxxxExxxx

CT70 Wireless Battery
CT70-xxx-xxxxWxxxx

	PART NUMBER	DESCRIPTION
1	CT70-BTSC-001	CT70 Standard Battery Pack, 4,775mAh
2	CT70-BTEC-001	CT70 Extended Battery Pack, 7,692mAh
3	CT70-BTWC-001	CT70 Wireless Battery Pack, 4,775mAh

CT70 RFID

IH45 RFID Reader with CT70 Non-Booted

Connect the IH45 to the CT70 via Bluetooth or USB.

IH45 has a user accessible replaceable battery.

Compatible with CT70 Standard Battery (CT70-BTSC-001)

Compatible with CT70 Wireless Battery (CT70-BTWC-001)

Compatible with CT70 Extended Battery (CT70-BTEC-001)



IH45 Front View



IH45 Rear View



IH45 Top View

	PART NUMBER	REGION	DESCRIPTION
1	IH45-O-N001S00UK	FCC / ANZ	IH45 High-Performance UHF RFID tag reader, US Frequency Range of RFID output (902-928MHz), Includes Battery
OR	IH45-O-N001S00OK	ETSI	IH45 High-Performance UHF RFID tag reader, EU Frequency Range of RFID output (865-868 MHz), Includes Battery
2	CT70-IH45-BK-N		CT70 Non-Booted RFID bracket with 4 screws for IH45, IH40 and IH25, hand strap compatible
3	50155100-001		IH45, IH40 and IH25 Wrist Strap

Honeywell Repair Services

SVCIH45-SG3N

IH45, Edge Service, Gold Maintenance Contract, 3 Year, New Contract

CT70 RFID CHARGING

Option 1 - IH45 Non-Booted Quad Charge

IH45 shares the same chargers as CT40/ CT45/ CT47.

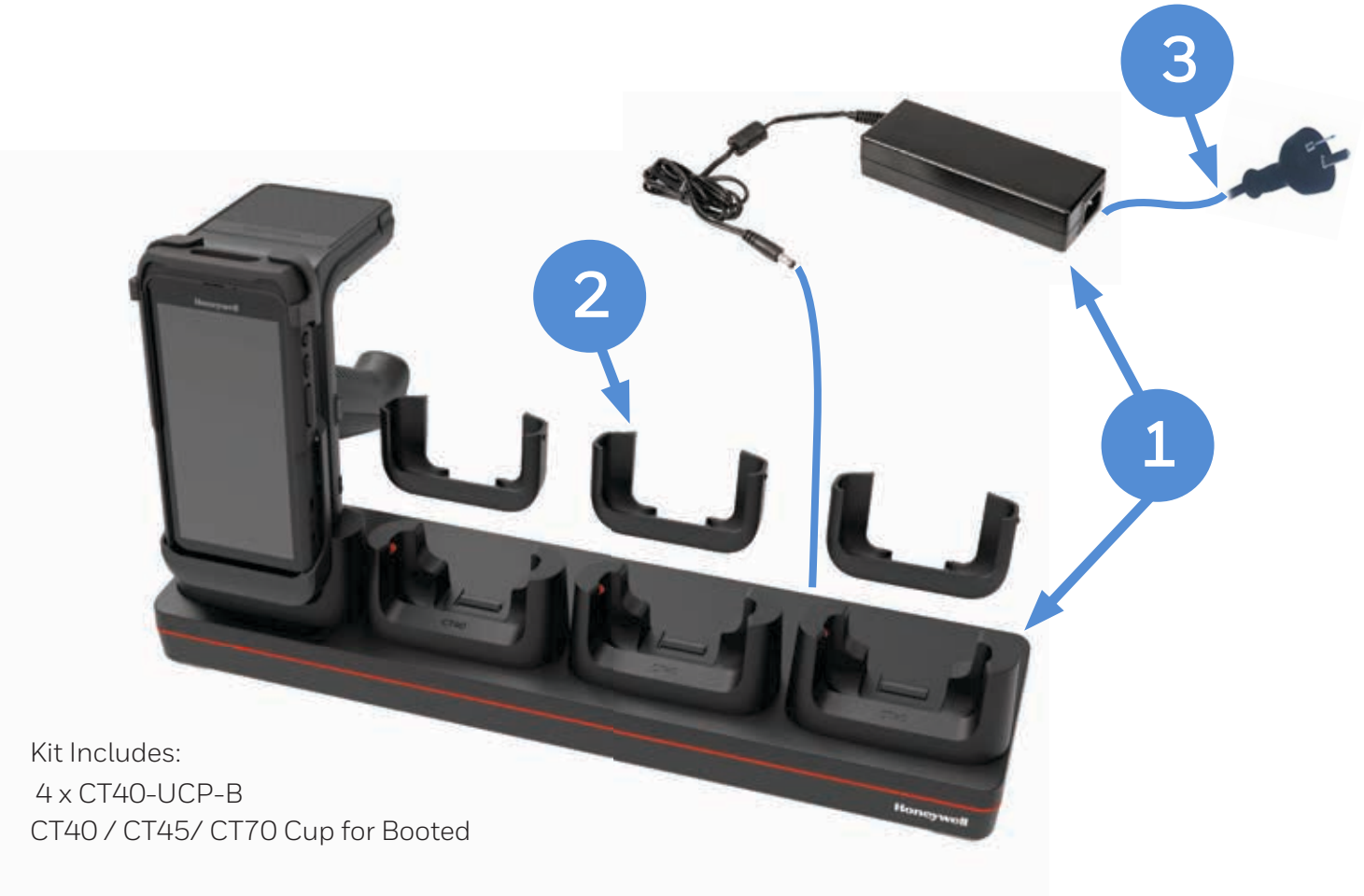


	PART NUMBER	DESCRIPTION
1	CT40-CB-UVN-0	Non-Booted Chargebase - Kit includes Dock and Power Supply
OR	CT40-NB-UVN-0	Non-Booted Netbase - For Ethernet comms, Kit includes Dock and Power Supply
2	**	IEC C13 AC Power Cord – See Page 47 for Country Specific Power Cords

Option 2 - IH45 Booted Quad Charger

IH45 shares the same chargers as CT40/ CT45/ CT47.

When using CT40 Booted chargers, the adapter sleeve is required to fit the IH45.

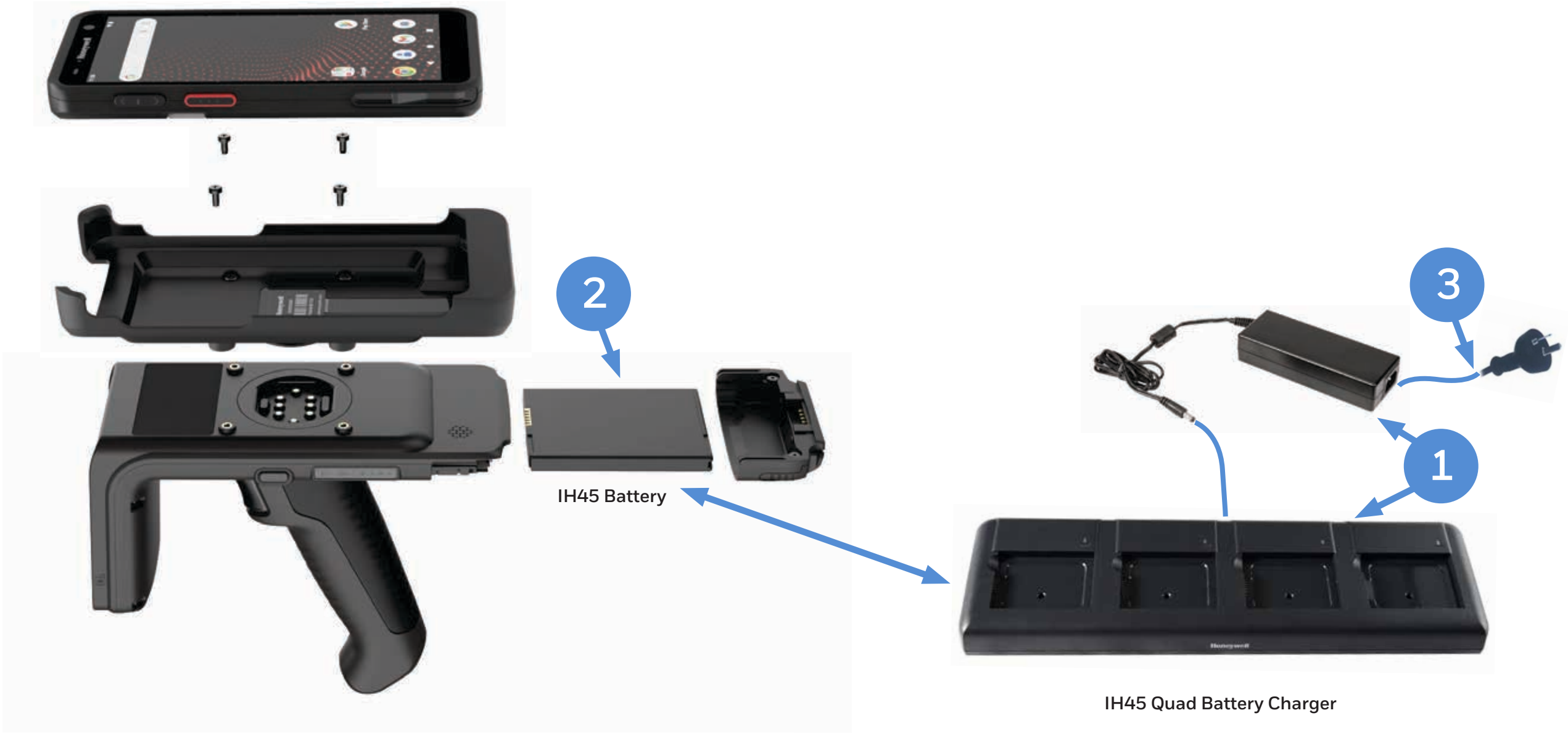


	PART NUMBER	DESCRIPTION
1	CT40-CB-UVB-0	Booted Chargebase - Kit includes Dock and Power Supply
OR	CT40-NB-UVB-0	Booted Netbase - For Ethernet comms, Kit includes Dock and Power Supply
2	IH40-ADP-SLV	IH40 Adapter Sleeve for Booted CT40 cup (CT40-UCP-B) - Order 4 adapters per Charge Base
3	**	IEC C13 AC Power Cord – See Page 47 for Country Specific Power Cords

CT70 RFID

Option 3 - IH45 Quad Battery Charger

IH45 shares the same chargers as EDA50/ EDA51 battery charger.



	PART NUMBER	DESCRIPTION
1	EDA50-QBC-0	Kit IH25/IH40/EDA50/EDA70/EDA71 Quad Battery Charger. Kit includes Dock, Power Supply, No Power Cord.
2	50129589-001	Accessory, Battery (3.8V, 4,000mAh), EDA50/51/70/71
3	**	IEC C13 AC Power Cord – See Page 47 for Country Specific Power Cords

CT70 HEADSET

USB-C CT70 Push To Talk (PTT) Headset

USB-C audio PTT and VoIP ready to support In-Store Communication with leading 3rd party applications.
Compatible with both Booted and Non-Booted CT70.



PART NUMBER	DESCRIPTION
1 MBL-HDST-USBC	Headset with PTT, USB C

CT70 WEARABLE

Wearable Kit

A lightweight forearm mount for handsfree operation.
Compatible with CT70 Extended Battery (CT70-BTEC-001)



	PART NUMBER	DESCRIPTION
1	CT70-WS-KIT	CT70 wearable kit, includes the Armband, Sled and Rubber pad. It is NOT compatible with CT70 with protective boot.

Wearable Kit – Replacement Parts

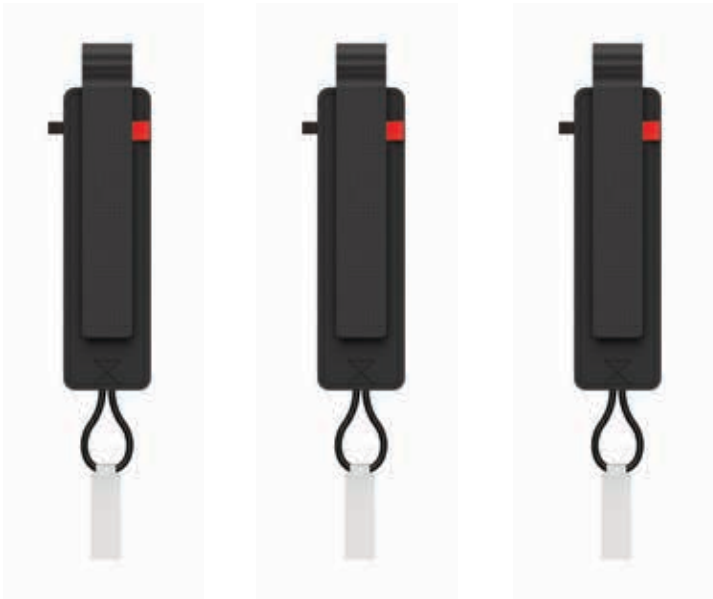
Purchase replacement armbands, rubber pads and sleds for your wearable kits.



	PART NUMBER	DESCRIPTION
1	CT37-WS-KIT-01	CT37/CT70 Wearable Kit, Spare Armband, 3 pieces per pack
2	CT37-WS-KIT-02	CT37/CT70 Wearable Kit, Spare Rubber Pad, 2 pieces per pack

MISCELLANEOUS

Optional Parts



PART NUMBER	DESCRIPTION
CT45-HS-FM	CT45/CT70 HAND STRAP for Field Mobility 3 pieces per pack. Larger handstrap for field mobility workers with big hands or those who wear gloves. Compatible with Vehicle Docks.



PART NUMBER	DESCRIPTION
CT70-SP-1	CT70 Screen Protector (Corning Gorilla Glass 7i), 1 Pack

Note: Holster is only recommended for CT70 with Non-Booted Scan Handle



PART NUMBER	DESCRIPTION
CT40-STL-1PKC	CT40, CT45, CT47, CT70 Sylan for use with or without screen protectors. Pack of 1.



PART NUMBER	DESCRIPTION
CT70-HST-1	CT70 Holster, Compatible with CT37, CT47, CT70 with or without Protective Boot.



PART NUMBER	DESCRIPTION
825-239-001	HOLSTER,SCAN HANDLE, CT4X, CT50, CT60, CT60 XP, CT70 without Protective Boot.



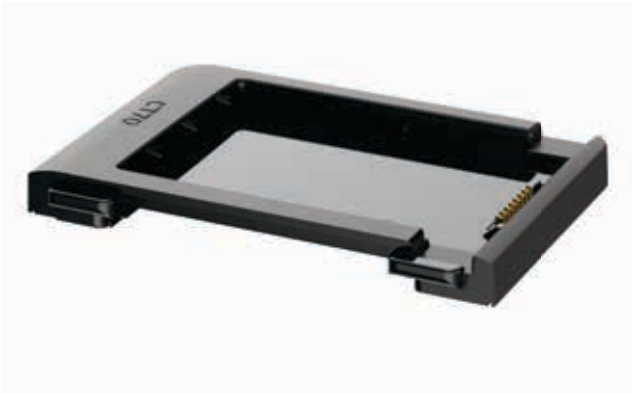
PART NUMBER	DESCRIPTION
50175391-001	CT45/ CT70 Wrist lanyard used on scan handle, compatible with Booted or Non-Booted scan handles, Pack of 1.

MISCELLANEOUS

Optional Parts



PART NUMBER	DESCRIPTION
CT70-UCP	CT70 Terminal Cup, Remove the insert to use CT70 with protective boot



PART NUMBER	DESCRIPTION
CT70-UCP-BAT	CT70 Homebase / eHomebase battery cup



PART NUMBER	DESCRIPTION
CT70-QBC-CUP	CT70 Battery Cup. Compatible with CT70 standard, wireless battery or extended battery



MISCELLANEOUS

Optional Parts

Replacement Power Supplies.



IEC C14



IEC C14



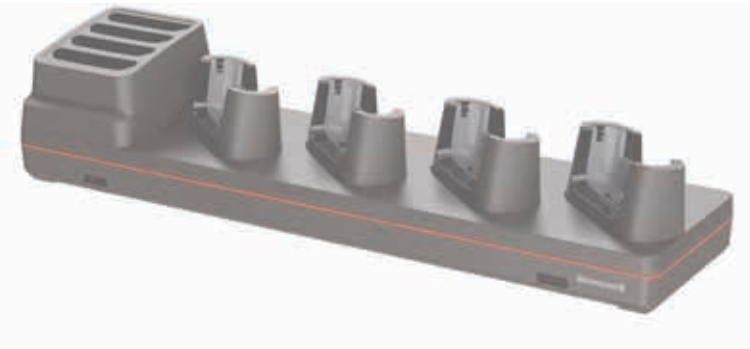
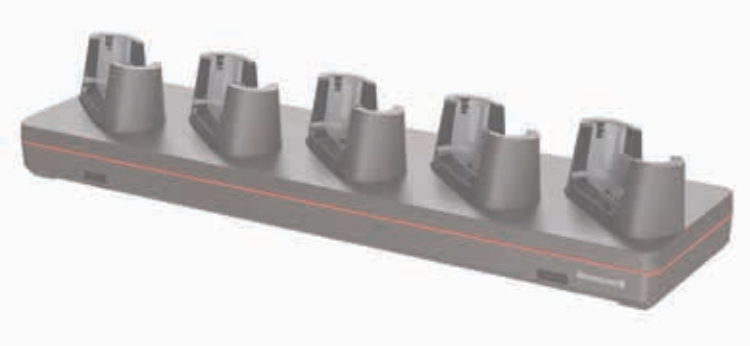
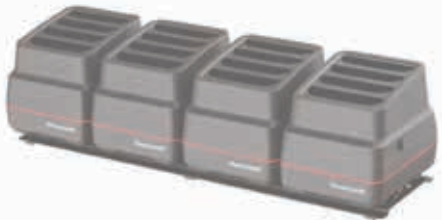
IEC C6



PART NUMBER	DESCRIPTION
50121666-001	Power Adapter,12V 3A, No Power Cord, Homebase / eHomebase / Quad Battery Charger (Requires IEC C13 AC Power Cord)



IEC C14



PART NUMBER	DESCRIPTION
CK6X-BC-PWRSUPPLY	Power Adapter,12V 15A, No Power Cord 16 Bay Battery Charger (Requires IEC C13 AC Power Cord)

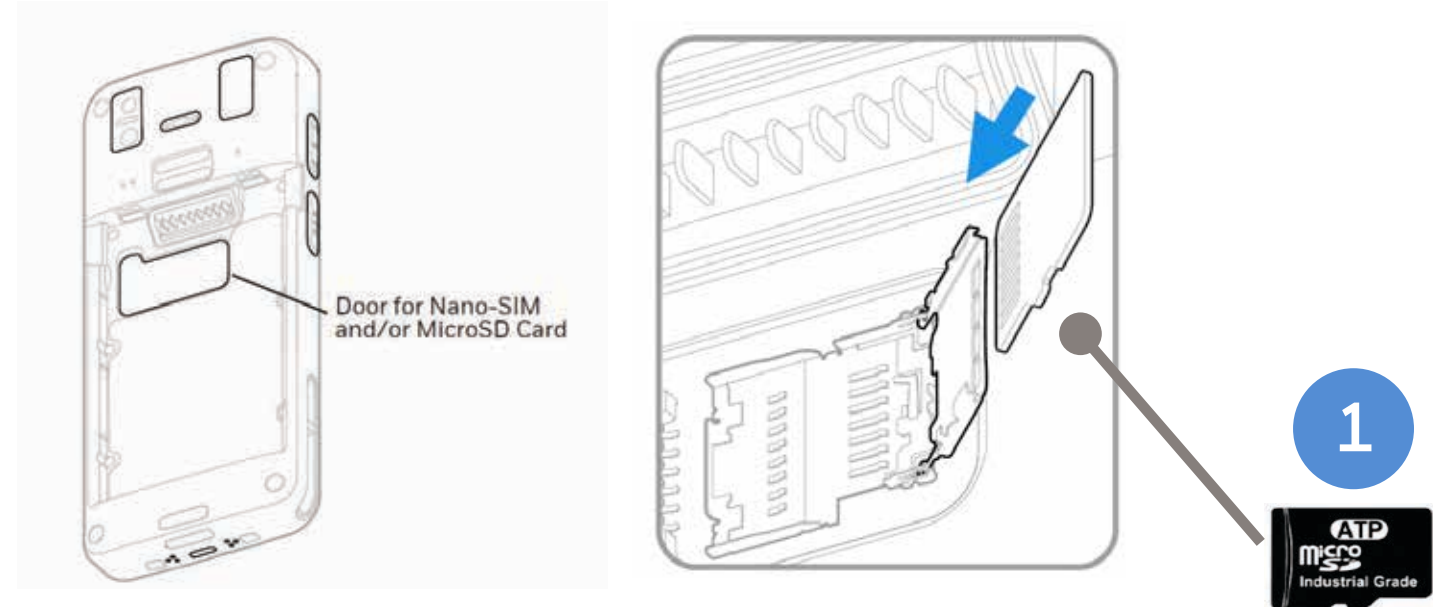
PART NUMBER	DESCRIPTION
50121667-001	Power Adapter,12V 7A, No Power Cord Quad Chargebase/Quad Netbase (Requires IEC C13 AC Power Cord)

PART NUMBER	DESCRIPTION
3007-3408-001	Power Supply 12V 8.3A R7B ADS-120QL-12-3 120100E 5-Bay Charge Base (Requires IEC C5 AC Power Cord)

MISCELLANEOUS

Micro-SD Cards

Honeywell Recommended – ATP Industrial Grade Micro SD Cards



Why ATP Industrial Grade SD?

ATP's SIP (System-In-Packaging) manufacturing process encapsulates all exposed components and points of failure to ensure the products are fully waterproof, shockproof, and ESD (Electro-Static Discharge) proof. ATP Industrial Grade SD/SDHC Cards can withstand at least an operating/storage temperature range of at least -40 to 85 degrees Celsius. In addition to this temperature range, the cards are completely waterproof, dustproof, and ESD (Electro-Static Discharge) proof. All ATP Industrial Grade SD/SDHC cards are produced under a stringent RoHs and Green Package compliant manufacturing process to guarantee a consistent high level of build quality and performance. ATP Industrial SD cards deliver outstanding performance with read speed (seq) up to 18MB/sec and write speed (seq) up to 16MB/sec. All ATP Industrial Grade CF, SD, USB drives, and SSDs are constructed using best-in-class SLC(Single-Level Cell) components with enhanced Error Correction Code(ECC) functions and wear levelling algorithms. This results in MTBF ratings over 2 million hours and the highest write cycle lifetimes in the industry.

	PART NUMBER	DESCRIPTION
1	856-065-004	MICRO-SD CARD, 1GB, AFIGUDI, ROHS
OR	856-065-005	MICRO-SD CARD, 2GB, AFIGUDI, ROHS
OR	856-065-006	MICRO-SD CARD, 4GB, AFIGUDI, ROHS
OR	856-065-007	MICRO-SD CARD, 8GB, AFIGUDI, ROHS



AC Cords

Regional Power Cords



AC Power - C13 Type Connector

PART NUMBER	TYPE	DESCRIPTION
50117501-001	C13	POWER CORD AUSTRALIA 2500MM,SLED CB
50117503-001	C13	Power cord, Argentina, Isled CB
321-501-002	C13	AC Power Cord, Denmark RoHS
77900508E	C13	Cable: power cord, straight, Power cord, Europe EU, IEC320-C13, 2.5 m (8.2 ft)
321-502-002	C13	AC Power Cord, India/South Africa RoHS
321-500-002	C13	AC Power Cord, Japan RoHS
9000093CABLE	C13	AC POWER CABLE, C14 TYPE, SWITZERLAND 3-PIN
77900507E	C13	Cable: power cord, straight - Power cord, UK, IEC320-C13, 2.5 m (8.2 ft)
130063	C13	AC Power Cord, US RoHS



AC Power - C5 Type Connector

PART NUMBER	TYPE	DESCRIPTION
3007-4681-001	C5	C5 type power cable, USA
3007-4683-001	C5	C5 type power cable, Europe
3007-4682-001	C5	C5 type power cable, UK
3007-4684-001	C5	C5 type power cable, Australia

MISCELLANEOUS

Disclaimer

Honeywell International Inc. (“HII”) reserves the right to make changes in specification and other information contained in this document without prior notice, and the reader should in all cases consult HII to determine whether any such changes have been made. The information in this publication does not represent a commitment on the part of HII.

HII shall not be liable for technical or editorial errors or omissions contained herein; nor for incidental or consequential damages resulting the furnishing, performance, or use of this material.

This document contains proprietary information that is protected by copyright. All rights are reserved. No part of this document may be photocopied, reproduced, or translated into another language with-out prior written consent of HII.

Web Address: automation.honeywell.com

The Bluetooth trademarks are owned by Bluetooth SIG, Inc., U.S.A and licensed to Honeywell.

Thor and Mobility Edge are trademarks or registered trademarks of Honeywell International Inc. in the United States and/or other countries.

Android is a trademark or registered trademark of Google Inc. in the United States and/or other countries. Windows is a trademark or registered trademark of Microsoft Corporation.

Qualcomm and Snapdragon are trademarks or registered trademarks of Qualcomm Incorporated in the United States and/or other countries.

Other product names mentioned in the manual may be trademarks of registered trademarks of their respective companies and are the property of their respective owners.

All rights reserved.

For more information
automation.honeywell.com

Honeywell Industrial Automation
855 S Mint St
Charlotte, NC 28202
800-582-4263
www.honeywell.com