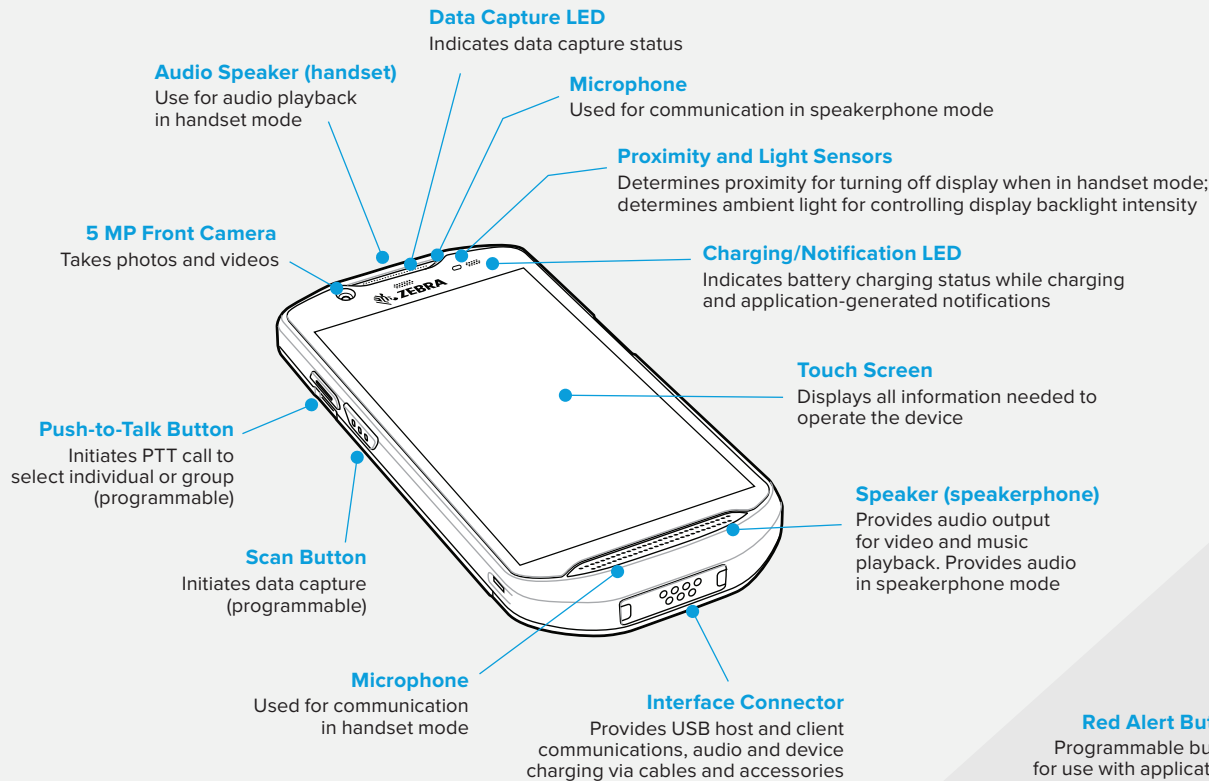
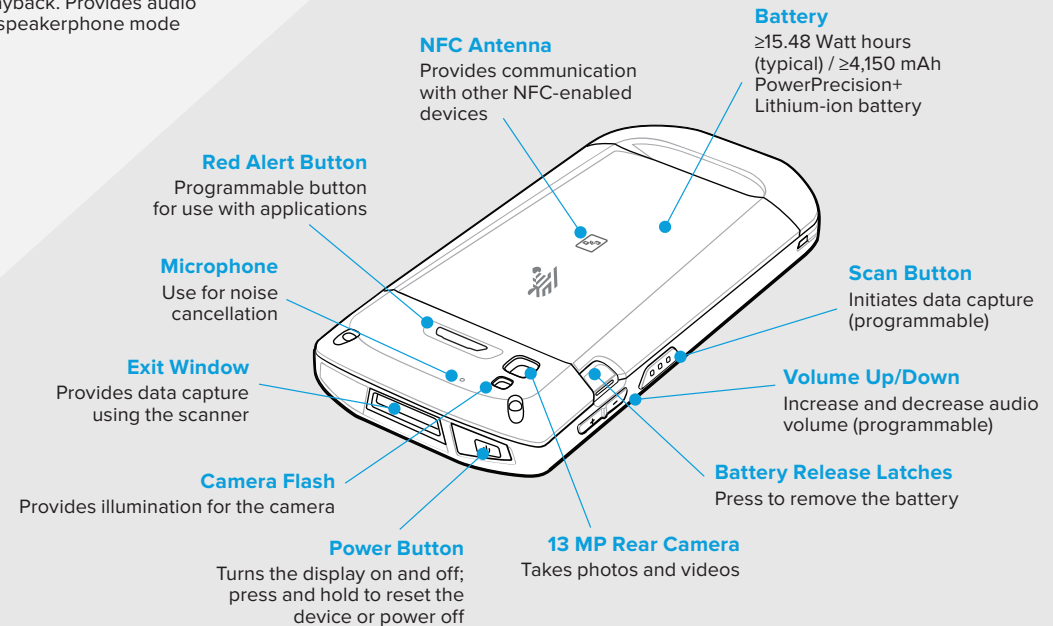




## Front View



## Back View

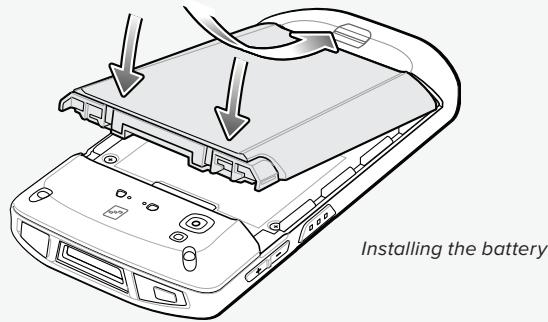


## Installing the battery

To install the battery:

1. Insert the battery, bottom first, into the battery compartment in the back of the device.
2. Press the battery down until it snaps into place.

Note: The TC52X-HC Series supports battery hot swap. There's no need to power down the device before replacing the battery. Simply remove the battery and insert a new one within 30 seconds to maintain the Wi-Fi connection and memory.



## Using the scanner

### Scanning a barcode

Use the following steps to scan a single barcode:

1. Ensure that a scan-enabled application is open and the text cursor is in a text field.
2. Point the exit window (top of the device) at the barcode.
3. Press and hold the scan button. The white LED aiming pattern and green aiming dot are activated to assist in aiming.
4. Ensure the barcode is within the illuminated area, using the green aiming dot for easier aiming in bright lighting conditions.
5. When a barcode is decoded successfully, the Data Capture LED lights green and a beep sounds, by default.
6. Release the scan button.
7. The barcode content data displays in the text field.

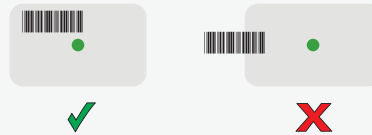
### Aiming in Picklist Mode

Picklist Mode is used to select a single barcode when multiple barcodes are in the scanner's field of view — for example in a picklist or on a label.

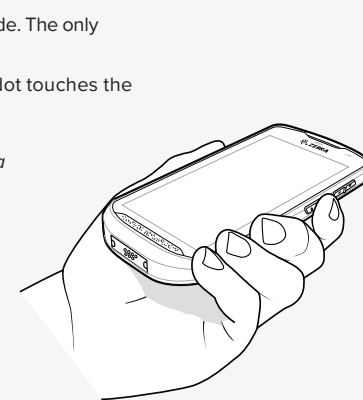
Use the steps in "Scanning a barcode" on the left to scan a barcode in picklist mode. The only difference is in Step 4, Aiming.

In Picklist mode, the scanner does not decode the barcode until the aiming dot touches the barcode. Refer to the diagrams below for proper aiming in each mode.

*Aiming in Standard Mode: Barcode must be within the large illumination area*



*Aiming in Picklist Mode: Aiming dot must touch the barcode*



Scanning a barcode: scan buttons are located on both sides for ambidextrous use

For more information about the TC52X-HC Series Healthcare Mobile Computer, please visit [www.zebra.com/tc52x-hc-series](http://www.zebra.com/tc52x-hc-series)



NA and Corporate Headquarters  
+1 800 423 0442  
inquiry4@zebra.com

Asia-Pacific Headquarters  
+65 6858 0722  
contact.apac@zebra.com

EMEA Headquarters  
zebra.com/locations  
contact.emea@zebra.com

Latin America Headquarters  
zebra.com/locations  
la.contactme@zebra.com