



## [ BHT-900 Series ]

The BHT-900 offers outstanding performance at an affordable price and features a high maximum reading speed of 400 scans per second. Thanks to CCD technology, it can even read damaged or poor-quality barcodes. The device can run for an exceptionally 200 hours between charges and is extremely robust, being able to withstand 60 drops onto concrete from a height of 1.2 m (3.9 ft.) C-level programming capable, free application generator (Easy Pack) creates data collection programs.

### A POWERFUL PERFORMER

#### CCD (charged coupled device) technology

- ☐ Top-quality reading performance
- ☐ High-speed scanning of up to 400 scans/second
- ☐ Excellent reading ability, even with hard-to-read or damaged barcodes

#### Battery

- ☐ Battery life of up to 200 hours between charges
- ☐ Compatible with Sanyo eneloop® or any rechargeable AA batteries
- ☐ Can be charged using a base station or USB cable

#### Large storage capacity

- ☐ 16 MB (user area 8 MB)

### USER FRIENDLY

#### Practical design

- ☐ Slim and light, fits in a shirt pocket
- ☐ Ergonomically shaped head for easy scanning
- ☐ Three trigger keys enable scanning with thumb and index finger (BHT-904 model)

#### Multi-communication

- ☐ Bluetooth 2.1
- ☐ Batch communication (compatible with RS232C, USB)
- ☐ USB direct connection compatible with USB-COM and MTP (Media Transfer Protocol)

#### Security

- ☐ Stable BHT-OS operating system
- ☐ No data loss if battery dies

### LONG-LASTING

#### Durability

- ☐ Designed to provide reliability for many years
- ☐ Rugged construction; only device in its class to withstand 60 drops onto concrete from a height of 1.2 meters
- ☐ Dust- and waterproof to IP54 standard

### ACCESSORIES

- ☐ Hand strap (included)
- ☐ Communication cradles:  
CU-901 (RS232C with charging function)  
CU-921 (USB with charging function)
- ☐ USB cable, shoulder strap, soft case, neck strap, waist case

### SOFTWARE

#### Out-of-the-box software

- ☐ Ready to use instantly after turning on
- ☐ No complicated settings are required, due to preinstalled basic operations software
- ☐ Collects and immediately matches data

#### BHT-Basic 4.0 development tools

- ☐ Development pack – application generator
- ☐ Compiler
- ☐ Transfer utility
- ☐ Transfer utility DLL pack
- ☐ Simulator library
- ☐ Program converter

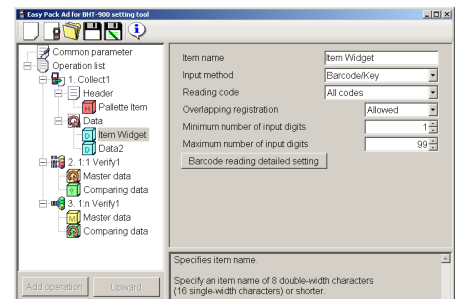
#### C-language development tool (library)

- ☐ Allows development with the most popular programming language (C)

### EASY PACK FOR BHT-900

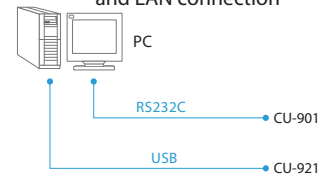
#### Create data collection applications for BHT-900

- ☐ Allows data collection as well as 1:1/1:n verification. Communication tool included.



### BATCH COMMUNICATION

Compatible with RS232C, USB, and LAN connection



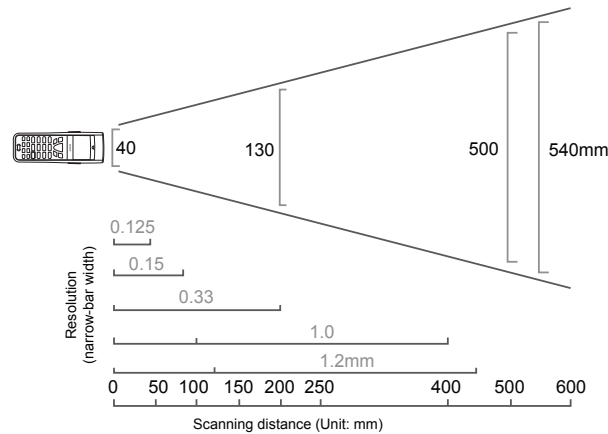
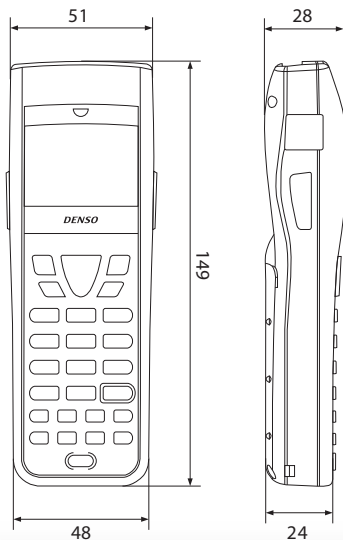
Communication cradle

# TECHNICAL DATA

Model		BHT-904B	BHT-904BB	BHT-914B
Storage				
CPU		32-bit RISC		
Memory <sup>1</sup>		16 MB (user-file area 8 MB)		
Operating system		BHT-OS		
Display				
Resolution		128 x 96 pixels		
Display		Liquid crystal dot-matrix display (monochrome)		
Size		32.6 x 24.5 mm		
Visual representation		21 lines x 12 characters (standard size), 21 lines x 16 characters (small size)		
Foreground illumination		White LED		
Scanner				
Scanning system		Advanced Scanning (CCD)		
Codes supported		EAN-13/-8 (JAN)13/-8), UPC-A/-E, UPC/EAN with additions, Interleaved 2 of 5, Codabar (NW-7), Code 39, Code 93, Code 128, GS1-128), RSS (GS1 DataBar)		
Resolution		0.125 mm		
Scan confirmation		Three-color LED (red/green/blue)		
Keypad				
Number of keys		28 keys (including 3 trigger keys)	26 keys (including 1 trigger key)	
Data transfer				
Optical interface	Standard	Infrared (IrDA-SIR Version 1.2 [low power] compatible)		
	Transfer speed	460.8 kbit/s max.		
	Max. distance	Approx. 0.15 m		
Bluetooth <sup>®</sup>		Bluetooth Version 2.1 (EDR Class 2 compatible)		
Cable interface		USB 2.0 (Hi-speed 480 Mbit/s), USB-COM/MTP (2)		
Power supply				
Main power supply		2 x alkaline AA batteries or 2 x AA Sanyo eneloop <sup>®</sup> rechargeable batteries		
Battery operating time <sup>2</sup>		Up to 200 hours <sup>3</sup>		
Battery-charging options		CU-901 (RS232C with charging function), CU-921 (USB with charging function), USB cable (CBBA-US2000/401), rechargeable AA batteries w/ wall charger, disposable alkaline batteries	USB cable (CBBA-US2000/401), rechargeable AA batteries w/ wall charger, disposable alkaline batteries	
Tools		Vibration, adjustable-volume beeper, resume and remote-activation function		
Operating conditions				
Operating temperature		5 °C ~ 50 °C		
Dust- and splash-proof protection		IP54		
Shock Resistance		60 times onto concrete floor from 1.2 m (3.9 ft.)		
Weight		Approx. 160 g		

1. User area includes font-file area (approx. 400 KB).
2. Operation hours may vary according to operating conditions.
3. Reading twice per 10 sec., without Bluetooth communication.
4. Tested data, not guaranteed.

## DIMENSIONS IN MM



### [DENSO ADC]

3900 Via Oro Ave.  
Long Beach, CA. 90810  
Phone + (888) MY DENSO  
+ (888) 693 3676  
Fax + (310) 835 8724  
denso-adc@denso-diam.com  
www.denso-adc.com

# DENSO



INVENTOR OF THE QR CODE<sup>®</sup>